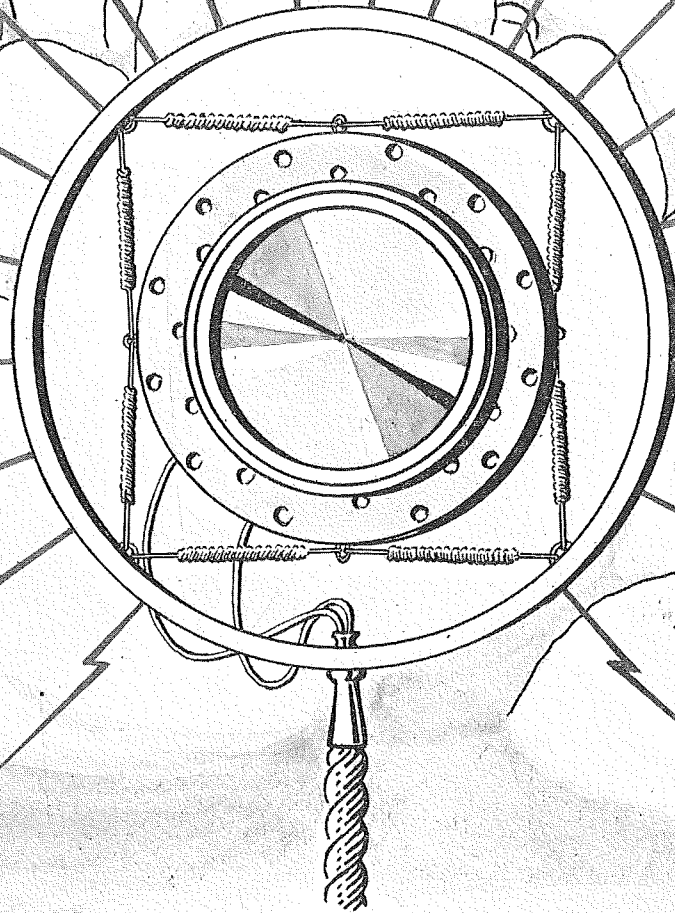
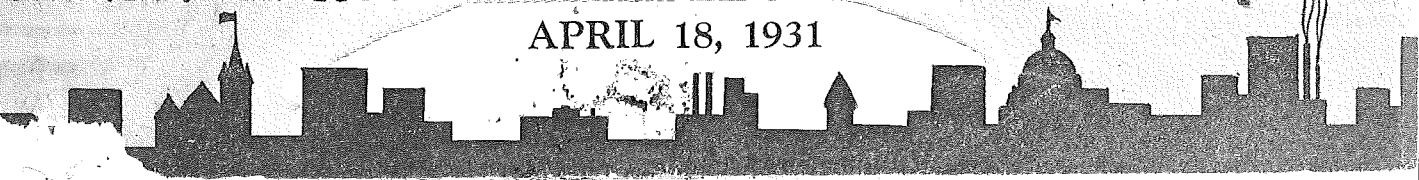


**NORTHWEST
RADIO
WEEKLY**



FIVE CENTS PER COPY ~ ~ ~ ONE DOLLAR & FIFTY CENTS PER YEAR

APRIL 18, 1931



Published Weekly by the Northwest Radio Publishing Co., 425 Hennepin Avenue, 1003-04 Lumber Exchange Building, Minneapolis, Minnesota.

J. S. BERGGREN
Editor

Northwest RADIO Weekly

Application for entry as Second Class Matter is pending.

Subscription Rate: \$1.50 per year. (52 numbers.)

"All The News on The Air"

Phone: Geneva 8204

B. BECKER
Business Manager

Volume 1

Saturday, April 18, 1931

Number 16

Daylight Saving Time

Sets Chain Programs One Hour Ahead, Starting April 26

WCCO

Sunday morning, April 26, radio listeners of WCCO throughout the Northwest will set their dials one hour ahead, figuratively speaking, for on that date, New York will advance its time one hour, and all chain programs will be heard an hour earlier than heretofore.

WCCO's schedule will undergo an almost complete revision, as many local programs will have to be moved to accommodate the early chain schedule, and listeners accustomed to guiding their day's activities according to the position of the planetary bodies, as related by Evangeline Adams, astrologist, each Monday and Wednesday at 6:30 p. m. over WCCO, will have to tune in at 5:30 p. m. after April 26th, for guidance of their next day's work.

Other program which will be heard before 6:00 p. m. is that of the adventures of Daddy and Rollo, which, after April 26th, will be broadcast from 5:45 to 6:00 p. m. on Tuesdays, Wednesdays and Thursdays. Lowell Thomas will give his Literary Digest Topics in Brief at 6

p. m. and the Barbasol Barbers will harmonize at 6:30 p. m. The Fast Freight program, featuring Eddie Dunstedter and the Wheaties Quartette, which originates at WCCO each Wednesday night will be sent over the Columbia network at 7:00 p. m., and the program of Arthur Pryor and his band will be heard nightly at 9:15 p. m. The broadcasts of the White Sox and Cubs will begin at 2:00 p. m. on Sunday, April 26th, instead of at 3:00, as at present, as Chicago also adopts the daylight saving schedule.

The change will necessitate shifting several local programs, all of which are not simply moving forward an hour, but will fill in the gaps caused by the change in chain features. The Kunz Best for the North program, featuring Cedric Adams, will be heard from 7:30 to 7:45 p. m. Sundays, instead of 7:45 to 8:00; Universal Topics will be given from 8:45 to 9:00 p. m. Wednesdays instead of 8:30 to 8:45; Ole Gundersen and Timothy Murphy, the Poli-

ticians, will recount their troubles at 7:30 p. m. Thursdays; the Conoco Listeners Hour will be scheduled at 7:00 p. m. Fridays instead of 8:00 p. m.; and the one program to move back instead of forward is the Atwood Request Coffee Hour, which will be scheduled at 7:00 instead of 6:30 p. m. Saturdays.

The change will bring back several old favorites and will allow WCCO to present some new features. Noticeable among the return of past features is the talk on The World's business, by Dr. Julius Klein, Assistant Secretary of Commerce, to be given at 6:15 p. m. Sundays, the antics of the Nit Wits, and the further adventures of Arabesque. Times for these two programs will be announced later. New programs will include the Tastyeast hour, to be heard daily except Thursday and Friday at 6:45 p. m., the Vitality Personalities, introducing many stars of the stage and screen, at 8:00 p. m. Wednesdays, and Cheramy, heard at 9:30 p. m. Tuesdays.

KSTP

Dial twisting, a sport which robbed many Northwest listeners of hours of sleep in the early days of radio, will again become a favorite pastime when radio fans attempt to find their favorite programs after daylight saving time is again installed in Chicago, New York and other cities of the country.

Children followers of Amos 'n' Andy may get an hour of extra sleep now, for these two popular blackface comedians will be presented at 9 p. m. Central Standard Time in the Northwest, instead of the former time of one hour later.

Other KSTP programs will change accordingly with the exception of the National Farm and Home Hour which will continue to give rural listeners interesting and valuable in-

formation from the United States Department of Agriculture, as well as entertainment, each day during the noon hour.

All programs of the National Broadcasting Company emanating from both WEAJ and WJZ will be presented an hour earlier by Northwest clocks at this great agricultural section of Minnesota and surrounding states served by KSTP will maintain central standard time during the summer.

KSTP will continue to go on the air at 6:30 a. m. each week-day and continue without a break during the entire morning, afternoon and evening, continuing until the wee hours of the next morning. The National Battery station will remain on the air 19 hours of each day, silencing its transmitter for the short

period of four or five hours after midnight each day.

NBC programs now heard in the morning and afternoon from KSTP will be on the air one hour earlier, and local programs emanating from both the St. Paul and Minneapolis studios, will be shifted to a new time, under the new time schedule.

The evening programs also will be heard an hour earlier, which will bring Rudy Valee and his Connecticut Yankees at 6:00 p. m. on each Thursday, instead of the present time, of one hour later. The Sunday schedule will continue with NBC programs earlier than usual and with the Sunshine Boys playing their usual programs. Sunday at Seth Parker's will be heard an hour earlier, as will the religious programs.

Radio Personalities

By Lowell Swenson

"TED" HEDDIGER

TED HEDDIGER, former staff announcer for the Chicago division of the National Broadcasting system and present program director for station WRHM, has had a meteoric career in radio. Ever since he was "knee-high-to-a-grasshopper" he has manifested considerable interest in broadcasting. In the early days of radio he was licensed telegrapher and owned and operated a short-wave wireless



TED HEDDIGER

transmitter and receiving set. Starting in the engineering phase of radio he soon became prominently identified with the announcing field.

Before recently rejoining the staff of WRHM to accept his new duties, Ted was identified with KHM and KGB in the capacity of announcer and operator, served as production manager for the old WRHM station, was operator of WAAH, served as chief announcer for KWK, and was prominently connected with the production and announcing departments of the NBC studios in Chicago.

Ted has grey eyes, sandy hair, and of medium build. He is 26 years old and has gleaned an education from several schools in various sections of the country. Yank Taylor, prominent Chicago columnist, speaks of Ted as follows:

"Perhaps the reason Ted is so human is because he has always been in radio from his short pants days down to his nightly 'tux'."

Recalling some of the interesting

and "trying" experiences he has had during his career in radio, Ted declared: "Talking extemporaneously for fifteen minutes during the broadcast of the Conference of Major Industries over a nation-wide hookup of the National Broadcasting System while speakers on the program were posing for newspaper photographers was one of the most trying experiences I have had in radio."

In the emergency he capably filled in the time with an impromptu talk on the modern art of flashlight photography and descriptions of the gathering. "Every time I paused to take a breath it seemed like I was quiet for ten minutes," Ted declared.

On one occasion Ted found himself confronted with the task of extemporaneously announcing and arranging a one-hour program which was broadcast over the National NBC hookup prior to the broadcast of an important football game. He received a letter notifying him that Harry Cogan and his orchestra, the popular Yeast Foamers, and himself were scheduled to present a one hour's sustained program prior to the broadcast of a football game on the following afternoon, late on the afternoon of the day before the scheduled broadcast. Copies of this letter had been sent to all parties concerned with the program, but at noon on the day of the broadcast which was scheduled for one o'clock, no continuity had reached Ted's office.

Frantically he rushed to the continuity department only to find that no material or information regarding the program had been placed in their possession. Ted hurried back to the studios where he met Harry Cogan, director of the orchestra, and was told the names of the first eight selections to be presented on the program.

This was only the beginning of his troubles, however, for only three members of the orchestra had arrived in the studio on time. Praying and hoping that enough of the players would arrive and take their places in the studio before he had concluded the opening announcement of the program Ted stepped to the "mike." His opening announcement was as extended and drawn out as an ordinary telephone conversation between two town gossips.

A cold sweat clinging to his brow, Ted talked on and on, calling the listeners' attention to the football game which was to be broadcast one

hour later, commenting on the weather, etc., until five members of the orchestra had taken their places and were prepared to play.

One by one the remaining members of the orchestra drifted into the studio until all except the drummer were present. At the conclusion of the first eight selections Ted rushed over to one of the players and asked him the name of the next selection to be played. Just before the completion of each ensuing selection he had to repeat this routine, each time making his announcements impromptu. If this program had been broadcast over a single station this sort of an experience would not have proved quite as harrasing but over a network of 52 stations it proved to be extremely unpleasant, Ted declares.

When Ted was a member of the NBC staff of announcers he announced the "Chicago Serenade" program, the program of "Evening Stars," the Chicago end of the National Farm and Home Hour, and many other popular chain features.

In addition to his duties as program director of WRHM he does a considerable amount of announcing.

Trans-Ocean Celebration of Shakespeare's Birthday

"The man in the street thinks of Shakespeare exclusively as a writer of blank verse," Sir Johnston Forbes-Robertson, most famous Shakespearean actor of the last fifty years, told Columbia's representative in London, "but actually, some of his greatest passages are in prose. It is curious, too, that the speeches of madmen or of people about to go mad are always in prose."

Forbes-Robertson will be heard during the Columbia international broadcast, which is scheduled for 11:30 a. m. Sunday, April 19. The Shakespearean broadcast is to commemorate the birth and death of the dramatist, who was born April 23, 1564, and died April 23, 1616.

TITO SCHIPA HEARD OVER WCCO MONDAY

Tito Schipa, premier tenor of the Chicago Opera Company, and one of the first lyric tenors of the world, will appear as guest artist on the program broadcast from WCCO at 7:30 p. m. Monday, April 20.

PHILCO SYMPHONY

Six distinguished composers figure in the all-French program presented by the Philco Symphony Orchestra, with Howard Barlow directing, in the concert from WCCO at 8:30 p. m. Tuesday, April 21.

Ted Husing

By J. G. Gude

TED HUSING is possessed of more nervous energy than any other radio announcer. He hasn't an ounce of fat on his wiry frame and yet during a football broadcast he sheds as much as five to seven pounds. Yet he never stops going, never seems fatigued. He spent the entire night and part of the next morning before the Taft funeral broadcast in the morgue of a Washington newspaper, gathering data he considered absolutely essential for the job ahead of him and then went out and talked almost steadily for three hours during the Columbia Broadcasting System's report of that moving event.

Last summer he finished three play-by-play broadcasts of the international polo matches and the finals of the men's singles tennis tournament just in time to catch a train to Newport for the broadcasts of the America's Cup Races. Most of the next six days he spent, on his feet, on the bridge of the Coast Guard Cutter "Champlain," most of the nights being tutored by Herbert Stone, a yachting expert, in the mysteries and intricacies of yacht racing. He returned to New York after that grueling schedule, thin and drawn, but full of enthusiasm and eagerness to begin preparations for the impending World Series and the 1930 football season.

He is a tyrant with his engineers, an intolerant martinet with his assistants and co-workers, and they would all cut off an arm for him. That is the measure of Ted Husing.

Ted was born Edward Britt Husing twenty-nine years ago in a town just nicely inside the border, at Deming, N. M., but moved with his family to Gloversville, N. Y., where the Erie Canal, and its banks, supplied the background for Ted's early athletic activity. He threw himself, as he does now, into the thick of everything, and was the natural leader of his own gang of kids.

When his family moved to New York, Ted entered Stuyvesant High, where he went in for basketball, football, baseball and boxing. The war interrupted what vague plans he



TED HUSING

had for college. Ted added a few years to his right age, and although he never saw the western front, he did manage to get as near France as Governor's Island, as a physical instructor in its training camp.

The end of the war found Ted restless and without plans for the future. The comparatively dull routine of college did not hold any appeal and the next few years were spent playing professional sports in the fall and winter and roaming the country during the summer months, kitch-hiking or riding the rails.

Between then and the time he was picked from 609 other applicants as an announcer at WJZ, he had only two permanent jobs. Selling wicker furniture held his interest for a month of two, and the only other job was as a runner with a Wall Street firm. That lasted for two weeks at \$12 a week. The second week he was there, Jess Willard met Jack Dempsey for the heavyweight championship of the world. Ted bet the head of his firm a week's salary that the Manassa Mauler would knock

(Continued on Page 14)

RADIO PROGRAM for Week of April 19th to 26th SUNDAY

205.4—KSTP—1460

- 10:45 a. m.—Second Church of Christ Scientist.
- 12:00 m.—National Oratorio Society.
- 1:00 p. m.—Grand Opera in America.
- 1:30 p. m.—Northwestern Yeast Company.
- 2:00 p. m.—National Youth Conference—Dr. Daniel Poling.
- 3:00 p. m.—Father Flanagan's Boys' Home Program.
- 3:30 p. m.—Sunshine Boys—Harold Klanck, Tenor.
- 4:00 p. m.—Zion Commandery Band—Knights Templar.
- 5:00 p. m.—Catholic Religious Hour.
- 6:00 p. m.—Beachcombers.
- 6:15 p. m.—Scotland Yards — Detective Mystery.
- 6:45 p. m.—Twin City Ice Merchants—Refreshing Melodies.
- 7:00 p. m.—Enna Jettick Melodies.
- 7:15 p. m.—Chase and Sanborn Choral Orchestra.
- 8:00 p. m.—Frozen Orange Juice Program.
- 8:15 p. m.—Don Carlos and His Marimba Band.
- 8:45 p. m.—Gens of Melody.
- 9:15 p. m.—KSTP Model Home Program.
- 9:45 p. m.—Seth Parker's Singing School.
- 10:15 p. m.—Heel-Hugger Melodies.
- 10:30 p. m.—Time-Weather.
- 10:35 p. m.—Russian Cathedral Choir.
- 11:00 p. m.—Gruen Time Signal.
- 11:01 p. m.—Marigold Ballroom Orchestra.

370.2—WCCO—810

- 9:45 a. m.—First Trinity Lutheran Church, Mpls., Rev. Carl J. Hoffman, Pastor.
- 10:45 a. m.—St. Paul District of the Zionists
- 11:00 a. m.—Jewish Art Program.
- 11:30 a. m.—Sir Johnston-Forbes-Robertson, Shakespearean actor and the English Singers from London.
- 12:15 p. m.—Recorded Program.
- 12:30 p. m.—Around the Samovar.
- 1:00 p. m.—Cathedral Hour.
- 2:00 p. m.—New York Philharmonic Symphony Orchestra, Arturo Toscanini, Conductor.
- 2:45 p. m.—Baseball Game—Chicago Cubs vs. St. Louis.
- 4:45 p. m.—Izaak Walton Hour.
- 5:00 p. m.—Cathedral of the Skies.
- 6:00 p. m.—The World's Business—Dr. Julius Klein.
- 6:15 p. m.—Rhythm Choristers.
- 6:30 p. m.—Toscha Seidel.
- 7:00 p. m.—Devils, Drugs and Doctors—Eastman Kodak Co.
- 7:15 p. m.—P. Schlamp & Son, Furriers.
- 7:30 p. m.—Kaltenborn Edits the News—S. W. Straus Co.
- 7:45 p. m.—Kunz Best for the North Program.
- 8:00 p. m.—Bulova Time Announcement.
- 8:00 p. m.—Zinsmaster Melodists.
- 8:30 p. m.—Detroit Symphony—Graham Paige Co.
- 9:00 p. m.—State High School Music Contest.
- 9:30 p. m.—Fortune Builders.
- 9:45 p. m.—The Round Towners With Freddie Rich and His Orchestra.
- 10:00 p. m.—Weather Report.
- 10:05 p. m.—Back Home Hour.

McRell's Sandwich Shop
"Where They Meet To Eat"

Quick Lunch Steaks and Chops

Lumber Exch. Bldg. 5th and Hennepin.

TUNE-IN!

STATION WDGY

EVERY DAY 10:30 A. M.

FRIDAYS 7:30 P. M.

SUNDAYS 2:00 P. M.

HOLSTAD COFFEE PROGRAM

SUNDAY—APRIL 19

WDGY

- 6:30 a. m.—Time Signal Musical Program Through Courtesy of Dr. Young.
- 8:30 a. m.—Musical.
- 9:30 a. m.—Acme Building Cleaning Co.
- 9:45 a. m.—Van Tilburg Oil Co.—Classic and Semi-Classic Musical Program.
- 10:00 a. m.—Watch Tower Electric Transcription.
- 10:15 a. m.—Eva Ray—Economics Lecture.
- 10:30 a. m.—First Unitarian Society Services from Shubert Theater—John Dietrich.
- 12:00 m.—Modernistic Permanent Wave Program.
- 12:30 p. m.—Arnold Car Hospital Program.
- 12:45 p. m.—Personality Class.
- 1:00 p. m.—Hurley Piano Co. With Evan-son Bros.
- 1:30 p. m.—Holsum Redheads Through Courtesy of Regan Bakery.
- 2:00 p. m.—Holstad Coffee Co. Symphonic Trio and Baritone.
- 2:30 p. m.—Town Market Furniture Co. Program with Betty Seland.
- 2:45 p. m.—Stayform Trio Through Courtesy of Stayform Co.
- 3:00 p. m.—Bob Hershey, Musical Program.
- 3:15 p. m.—Hawaiian Silhouettes.
- 3:30 p. m.—Jarvaise de Gulle Program.
- 3:45 p. m.—No. 5 E. Lake St. Program Through Courtesy of Orra G. Scott—Yellow Jackets Dance Orchestra.
- 4:15 p. m.—Talk on Television by Mr. Keltner.
- 4:30 p. m.—Broadway Temple Sunday Devotional Hour—Rev. Carl Hog-lander.
- 5:30 p. m.—Little German Band.
- 5:45 p. m.—48th St. Christian Church—James C. Brown, Pastor.
- 6:00 p. m.—Ted Stephens Orchestra.
- 6:30 p. m.—Ralph Reesberg and his El Patio Cafe Dance Orchestra.
- 7:00 p. m.—Eagles Ballroom Orchestra Through Courtesy of Stecker Bros.

239.9—WRHM—1250

- 12:00 midnight—The Midnight Maniacs.
- 12:25 a. m.—Gluek Brewing Co.
- 1:00 a. m.—Midnight Maniacs.
- 9:30 a. m.—Rosedale Trio.
- 10:00 a. m.—Tingdale's Hour of Happiness.
- 11:00 a. m.—Services from Simpson M. E. Church.
- 12:30 p. m.—Watchtower Program.
- 12:45 p. m.—Wesley Chimes.
- 1:00 p. m.—The Golden Hour.
- 2:00 p. m.—'Echoes of Hollywood.'
- 2:30 p. m.—Tingdale's Half Hour of Happiness.
- 4:00 p. m.—Vesper Services—Rosedale Lutheran Church—Rev. Gronseth.
- 4:30 p. m.—Bethesda Free Church — Song Service with H. B. Prince.
- 5:00 p. m.—The Good News Hour.
- 6:00 p. m.—Sunshine Hour with Luke Rader.
- 8:00 p. m.—Services from the River Lake Tabernacle.
- 10:00 p. m.—Greek Bible Students.
- 10:30 p. m.—Oak Grove Country Club.
- 11:00 p. m.—Smelling Tavern.
- 11:30 p. m.—Oak Grove Country Club.

MONDAY—APRIL 20

205.4—KSTP—1460

- 6:30 a. m.—Early Risers' Club — Time Signals.
- 7:00 a. m.—News Items.
- 7:25 a. m.—Program for the Day.
- 7:30 a. m.—American Institute of Food Products Organ Program.
- 7:45 a. m.—Jolly Bill and Jane.
- 8:00 a. m.—Quaker Early Bliss—Gene and Glenn.
- 8:30 p. m.—Musical Interlude.
- 8:45 a. m.—A. and P. Gypsies.
- 9:00 a. m.—Morrison's Inc.
- 9:05 a. m.—Musical Interlude.
- 9:25 a. m.—Leader Department Store Program.
- 9:30 a. m.—New York Stock Exchange Market Reports.
- 9:40 a. m.—Livestock Flash—Grain Markets.

**Atwater Kent
Winner Signed for
NBC Programs**



CAROL DEIS

Carol Deis, soprano, who won the fourth annual national radio audition conducted by the Atwater Kent Foundation has been signed for a series of programs over the National Broadcasting Company and will be heard through KSTP. She won over a group of singers selected from every section of the country.

KSTP was the Northwest station which had charge of the Minnesota auditions for the Atwater Kent Foundation with Stanley E. Hubbard, vice-president and general manager of KSTP as state manager of the Minnesota division. Professor Carlyle M. Scott, director of the University Music School, was in charge of the actual selecting of voices taken in this state.

Announcements will soon be made of the next series of auditions which will be presented over KSTP to select the Minnesota winner of the fifth year's audition. Miss Deis, for her work in the fourth auditions last winter received a \$5,000 cash prize and a two-years' scholarship for voice study.

We Buy Old Gold

Gold Teeth, Diamonds, Old Broken Watches and Cases. Scrap Jewelry of Any Kind. Sell to a reliable firm and get the highest possible prices.
Bring It or Mail It

Dahl's Refining Co.

Geneva 2782
447 Loeb Arcade—5th St.—Hennepin

MONDAY—APRIL 20

205.4—KSTP—1460

- 10:00 a. m.—Aunt Sammy Chat.
- 10:15 a. m.—Radio Household Institute.
- 10:30 a. m.—Gratia Barre—Make-Up Box.
- 11:00 a. m.—Musical Interlude.
- 11:15 a. m.—Quick Arrow Program.
- 11:3 a. m.—Reports.
- 11:45 a. m.—National Farm and Home Hour.
- 12:30 p. m.—Tuneful Tunes.
- 1:00 p. m.—Flame Room Orchestra.
- 1:15 p. m.—Songs Without Words — Dr. Richter.
- 1:30 ap. m.—Adventures of Captain Tim Healy—Taniac Company.
- 1:45 p. m.—Sisters of the Skillet.
- 2:00 p. m.—Blue Blazers.
- 2:15 p. m.—Closing Grain Markets.
- 2:30 p. m.—New York Stock Exchange Market Reports.
- 2:45 p. m.—The Gossipers.
- 3:00 p. m.—Hotel Cosmopolitan Dance Orchestra.
- 3:30 p. m.—Friendly Reveries.
- 3:45 p. m.—Matinee Melodies.
- 4:00 p. m.—Lever Bros. Program.
- 4:15 p. m.—Cecil and Sally.
- 4:25 p. m.—Home and Abroad—Hollywood—Fashion Talk.
- 4:30 p. m.—University of Minnesota Sun-lites.
- 5:00 p. m.—Children's Hour.
- 5:30 p. m.—Mormon Tabernacle Choir.
- 5:45 p. m.—News About Town.
- 6:05 p. m.—J. Adam Bede.
- 6:15 p. m.—David Lawrence Dispatch.
- 6:20 p. m.—Sports Review.
- 6:25 p. m.—Financial Resume.
- 6:30 p. m.—Phil Cook—Quaker Oats Man.
- 6:45 p. m.—Vanna Johnstone, Astrologist.
- 7:00 p. m.—Ballard Time Signal
- 7:00 p. m.—Musical Interlude.
- 7:15 p. m.—Penzoll Program.
- 7:30 p. m.—Alligator Raincoat Time.
- 7:45 p. m.—Morrison Codegram.
- 8:00 p. m.—Maytag Orchestra.
- 8:30 p. m.—General Motors' Ramly Party.
- 9:00 p. m.—E. I. du Pont de Nemours & Co. Program — DuPont Speed Blenders.
- 9:15 p. m.—Williams' Ice-O-Matics.
- 9:30 p. m.—Great Northern Empire Builders.
- 10:00 p. m.—Amos 'n' Andy.
- 10:15 p. m.—Ayers News Bulletin.
- 10:16 p. m.—Time, Temperature, Weather.
- 10:20 p. m.—'Soap & Bubbles'—2 Piano Team.
- 10:30 p. m.—Louie's Hungry Five.
- 10:40 p. m.—Boulevards of Paris Orchestra.
- 11:00 p. m.—Bjorklund's Scandinavian Orchestra.
- 11:30 p. m.—Leonard Leigh—Organ Hour.
- 12:30 a. m.—Dance Frolic.

370.2—WCCO—810

- 6:45 a. m.—Albert Lea Hatchery Time Signal Program.
- 7:45 a. m.—The Old Dutch Girl.
- 8:00 p. m.—Time Signal Program.
- 8:30 p. m.—Associated Nurseries' Time Signal Program.
- 9:20 a. m.—Twin City Ice Merchants.
- 9:30 a. m.—F. W. Fitch Co.
- 9:45 a. m.—Jo-Cur.
- 10:00 a. m.—Weather and Market Reports, New York Stock Exchange.
- 10:15 a. m.—Witt's Cooking School of the Air.
- 10:30 a. m.—Uneda Bakers—National Biscuit Co.
- 10:45 a. m.—The World Book Woman.
- 10:55 a. m.—Bohn Refrigerator Co.
- 11:15 a. m.—The Poetry Basket.
- 11:30 a. m.—Market Reports and New York Stock Exchange, Livestock Market Summary.
- 11:50 a. m.—Minnesota Police Association Bulletin.
- 12:00 m.—News Bulletin.
- 12:15 p. m.—Columbia Farm Community Network.
- 1:00 p. m.—Columbia Artists' Recital.
- 1:30 p. m.—American School of the Air.
- 2:00 p. m.—Weather and Market Reports.
- 2:30 p. m.—Ann Leaf at the Organ.
- 2:40 p. m.—New York Stock Exchange.
- 2:45 p. m.—Baseball Game—Chicago Cubs vs. St. Louis.

MONDAY—APRIL 20

370.2—WCCO—810

- 5:00 p. m.—Price's Vanilla Players.
- 5:15 p. m.—The Chicken Dinner Joke Jam-boree.
- 5:20 p. m.—Gordon Kibbler's Fulton Royal Orchestra.
- 5:30 p. m.—Paul Oberg—Piano.
- 5:40 p. m.—Mpls. Star News Story.
- 5:45 p. m.—Livestock Market Summary.
- 5:55 p. m.—Road Conditions Bulletin.
- 6:00 p. m.—Dinner Concert—Curtis Hotel Orchestra, Dick Long, Director.
- 6:10 p. m.—The Deacon's Dicta—Well-Dickey Co.
- 6:30 p. m.—Evangeline Adams, Astrologer—The Forhan Co.
- 6:45 p. m.—Paul Oberg—Organ.
- 7:00 p. m.—Literary Digest Topics in Brief—Lowell Thomas.
- 7:15 p. m.—Barbasol Ben and his Barbers.
- 7:30 p. m.—The Simmons Hour.
- 8:00 p. m.—Bulova Time Announcement.
- 8:00 p. m.—The Three Bakers—Standard Brands, Inc.
- 8:30 p. m.—Bourjois—An Evening in Paris.
- 9:00 p. m.—Robert Burns Panatela Program.
- 9:30 p. m.—Savino Tone Pictures.
- 10:00 p. m.—Weather Report.
- 10:05 p. m.—Morton Downey with Leon Belasco's Orchestra.
- 10:15 p. m.—Arthur Pryor's Crema Military Band.
- 10:30 p. m.—Ben Bernie and his Orchestra.
- 11:00 p. m.—WCCO Monday Night Club.

WDGY

- 9:30 a. m.—Beyer System Clinic.
- 9:45 a. m.—Chenille Rug Co.
- 10:00 a. m.—Town Market Furniture Co.
- 10:15 a. m.—Holsum Redheads — Regan Bakery.
- 10:30 a. m.—Holstad Coffee Co. Pipe Organ Program by Mr. Helsing.
- 10:45 a. m.—Minneapolis Box Spring & Mattress Co.
- 11:00 a. m.—Personality Class.
- 11:15 a. m.—Beauty Hints by Mr. Charles of Mar Selm Beauty Shop.
- 11:30 a. m.—American Chenille Rug Co.
- 11:45 a. m.—Moler School of Beauty.
- 12:30 p. m.—Ogard S. Stemland — Piano-ologue.
- 1:00 p. m.—Eva Ray—Economics Lecture.
- 1:15 p. m.—Marge and Grace Tonander, Guitar and Banjo Specialty.
- 1:30 p. m.—Rydeberg Sign Co.
- 1:45 p. m.—Romeo Gutsch, Piano.
- 2:00 p. m.—Varied Program.
- 2:15 p. m.—Bud Damon, Musical.
- 2:45 p. m.—Theronoid—Health Talk.
- 3:00 p. m.—Mat de Long's Orchestra.
- 4:00 p. m.—Theatrical Attractions.
- 4:15 p. m.—Kiddie Hour.
- 4:30 p. m.—Minneapolis Shoe Co.
- 4:45 p. m.—Bill Rondeau—Hill-Billy Songs With Guitar.
- 5:00 p. m.—Fairbanks Tailoring Co.
- 5:30 p. m.—Stock Nursery Co.
- 5:45 p. m.—Sports Review.
- 6:00 p. m.—Ernie and Hal—Harmony Boys.
- 6:15 p. m.—Gayety Theater Program with Gene Darby and Snooze Kineard.
- 6:30 p. m.—Grand Showcase Co. and Program by Harry Anderson.
- 6:45 p. m.—9-minute Auto Wash Program.

WHDI

- 6:30 a. m.—Time O' Day.
- 6:35 a. m.—Morning News.
- 6:50 a. m.—Music.
- 7:00 a. m.—Health Exercises — Sunny Lou and Pat.
- 7:15 a. m.—Time O' Day.
- 7:30 a. m.—Health Exercises — Sunny Lou
- 7:35 a. m.—Time O' Day.
- 7:40 a. m.—Music.
- 7:50 a. m.—Weather Report.
- 8:00 a. m.—Timmy O' Day in Songs for the Kiddies.
- 8:05 a. m.—Musical Program.
- 8:50 a. m.—Housewives' Recipe Exchange.
- 8:55 a. m.—Time O' Day.
- 9:00 a. m.—Musical Program.
- 9:30 a. m.—Time O' Day.
- 7:00 p. m.—Talk on "Happness" — Rev. Chas. J. Schaufuss.
- 7:15 p. m.—Special Musical Program.
- 7:30 p. m.—Maude O'Conner's Little Theater of the Air—One-Act Play.

WLB University Station

The life and work of the great Scandinavian author, Johan Boyer, will be reviewed over WLB Tuesday night, April 21, at 8:15, by Thorvald B. Madsen, of the Scandinavian department of the University of Minnesota. Mr. Boyer's recent book, "The Everlasting Struggle," and many of his earlier works have made him popular with American readers.

On Thursday night at 8 o'clock, WLB presents something unusual in the way of radio entertainment in the form of a debate. A topic of contemporary interest will be argued by able student debaters who are taking work in the department of speech. WLB radio debates have proved immensely popular and this is the second of a series of three being broadcast during the spring quarter.

On the Mothers' Hour program, Thursday morning at 10:30 o'clock, the play of young children will be discussed by Florence Pitman, a member of the Nursery School staff of the Institute of Child Welfare at the University of Minnesota.

TRACK AND FIELD MEET BROADCAST BY NBC

Track and field competition which annually attracts the notice of the nation will be described over a National Broadcasting Company net, work, including KSTP, at 3:30 p. m. Saturday, April 25, when a microphone account of the Drake University Relays, to be held at Drake stadium in Des Moines, Iowa, is broadcast.

▼▼▼
INDIVIDUALLY
TAILORED
CLOTHES.

▼▼▼
APPOINTMENTS
GE 1573 DU 6676

▼▼▼
OSCAR MYSTROM
302 Nicollet Avenue
MINNEAPOLIS

MONDAY—APRIL 20

WLB

- 12:30 p. m.—University Farm Hour.
- 7:00 p. m.—Student Musicale.
- 7:30 p. m.—German Lesson—Professor O. C. Bukhard.

230.9—WBBM—1250

- 12:00 midnight—The Midnight Revelers.
- 7:00 a. m.—Morning Meditations — Rev. Marion Shutter.
- 7:15 a. m.—Morning Time Signals.
- 7:30 a. m.—Foreman & Clark.
- 7:45 a. m.—Crechette Company.
- 8:30 a. m.—Davis & Rueben.
- 9:00 a. m.—Community Builders.
- 9:15 a. m.—Minneapolis House Furnishing Co.
- 9:30 a. m.—Theronoid of Minneapolis.
- 10:35 a. m.—Shopping Aids.
- 11:00 a. m.—Chenille Rug Co.
- 11:15 a. m.—Julia Hayes.
- 11:45 a. m.—Harry Franklin Baker.
- 12:00 noon—Back on the Farm—Butler Mfg. Co. Hy and Ruba.
- 12:20 p. m.—Livestock and Weather Report.
- 1:00 p. m.—Popular Program.
- 1:45 p. m.—Central Tire & Supply Co.
- 2:30 p. m.—The Venetian Serenaders.
- 3:00 p. m.—Mitby Sather Furn. Co.
- 3:45 p. m.—Sunshine Hour.
- 4:00 p. m.—Tingdale's Half Hour of Happiness.
- 5:15 p. m.—Big Brother Jim.
- 5:30 p. m.—Madame Eva Ray.
- 5:45 p. m.—Sports Review.
- 6:00 p. m.—Dusty and Rusty.
- 6:15 p. m.—Progress in Aviation.
- 6:30 p. m.—Lager's Orchestra—Kildal Co.
- 10:00 p. m.—Methodist Hour.
- 10:30 p. m.—Oak Grove Country Club.
- 11:00 p. m.—Brown Derbies.
- 11:30 p. m.—Jack Malerich, Organ.

TUESDAY—APRIL 21

205.4—KSTP—1460

- 6:30 a. m.—Early Risers Club — Time Signals.
- 7:00 a. m.—News Items.
- 7:25 a. m.—Program for the Day and General News and Foreign Dispatches.
- 7:30 a. m.—Musical Interlude.
- 7:45 p. m.—Jolly Bill and Jane.
- 8:00 a. m.—Quaker Early Birds—Gene and Glenn.
- 8:30 a. m.—Musical Interlude.
- 8:45 a. m.—A. and P. Gypsies.
- 9:00 a. m.—Morrison's, Inc.
- 9:05 a. m.—Morning Matinee.
- 9:25 a. m.—Leader Dept. Store Parade.
- 9:30 a. m.—New York Stock Exchange Market Reports.
- 9:40 a. m.—Livestock Flash — Grain Markets.
- 9:45 a. m.—Josephine B. Gibbon — Food Talk.
- 10:00 a. m.—Aunt Sammy Chat.
- 10:15 a. m.—Radio Household Institute.
- 10:30 a. m.—Sim's Malto Wheat Program.
- 10:35 a. m.—Bohn Refrigerator Co.
- 10:45 a. m.—Germania Tea Company.
- 11:00 a. m.—Rumford Cooking School.
- 11:15 a. m.—Quick Arrow Program.
- 11:30 a. m.—Reports.
- 11:45 a. m.—National Farm and Home Hour.
- 12:30 p. m.—Thirty Minutes on Broadway—Organ.
- 12:55 p. m.—Mr. Carlyle — Goodwill Industries.
- 1:00 p. m.—Minnesota Federation of Women's Club.
- 2:00 p. m.—Music in the Air.
- 2:30 p. m.—Closing Grain Market.
- 2:40 p. m.—New York Stock Exchange.
- 2:45 p. m.—The Gossipers.
- 3:00 p. m.—Vanna Johnstone, Astrologist.
- 3:15 p. m.—Pacific Vagabonds.
- 4:00 p. m.—Nesco Program.
- 4:15 p. m.—Cecil and Sally.
- 4:30 p. m.—Rinso Talkie.
- 4:45 p. m.—Children's Hour.
- 5:00 p. m.—Steamboat Bill—Campbell Cereal Co.
- 5:30 p. m.—News About Town.
- 6:00 p. m.—Voters' Service.
- 6:30 p. m.—David Lawrence Dispatch.

TUESDAY—APRIL 21

205.4—KSTP—1460

- 6:35 p. m.—Sports Review.
- 6:40 p. m.—Financial Resume.
- 6:45 p. m.—J. Adam Bede.
- 7:00 p. m.—Ballard Time Signal.
- 7:01 p. m.—Blackstone Plantation Program.
- 7:30 p. m.—Florsheim Frolics.
- 8:00 p. m.—McKesson Musical Magazine.
- 8:30 p. m.—Happy Wonder Bakers.
- 9:00 p. m.—Lucky Strike Dance Orchestra.
- 9:30 p. m.—Twin City Ice Merchants—Refreshing Melodies.
- 9:45 p. m.—Silhouettes.
- 10:00 p. m.—Amos 'n' Andy.
- 10:15 p. m.—Ayers' News Bulletin.
- 10:16 p. m.—Time, Temperature, Weather.
- 10:20 p. m.—Chevrolet Chronicles.
- 10:50 p. m.—Louie's Hungry Five.
- 11:01 p. m.—Palace-Orpheum Vaudeville Hour.
- 11:30 p. m.—Hennepin-Orpheum Vaudeville Hour.
- 12:00 p. m.—Flame Room Orchestra.
- 12:30 a. m.—Boulevards of Paris Orchestra.

370.2—WCCO—810

- 6:45 a. m.—Albert Lea Hatchery Time Signal Program.
- 7:45 a. m.—Time Signal Program.
- 8:30 a. m.—Associated Nurseries' Time Signal Program.
- 9:20 a. m.—Twin City Ice Merchants.
- 9:25 a. m.—Jo-Cur.
- 9:30 a. m.—O' Cedar Time.
- 9:45 a. m.—Party House.
- 10:00 a. m.—Weather and Market Reports, New York Stock Exchange.
- 10:45 a. m.—International Corset Co.—Style Talk by Mmie. Camille.
- 11:00 a. m.—Paul Tremain and His Orchestra.
- 11:15 a. m.—Child Training—Dr. Herbert Chamberlain.
- 11:30 a. m.—Market Reports and New York Stock Exchange, Livestock Summary.
- 11:45 a. m.—Minnesota Police Association Bulletin.
- 11:50 a. m.—Henhouse Henry—International Sugar Feed Co.
- 12:00 m.—News Bulletin.
- 12:15 p. m.—Rochester Chick Hatchery.
- 12:20 p. m.—Hotel Lowry Orchestra.
- 1:15 p. m.—The Four Clubmen.
- 1:30 p. m.—American School of the Air.
- 2:00 p. m.—Weather and Market Reports.
- 2:30 p. m.—The Captivators.
- 2:40 p. m.—N. Y. Stock Exchange.
- 2:45 p. m.—Baseball Game—Chicago Cubs vs. St. Louis.
- 5:00 p. m.—The Chicken Dinner Joke Jam-boree.
- 5:05 p. m.—Children's Comrade Club—Peggy and Pal.
- 5:30 p. m.—Curtiss Candy Co.
- 5:35 p. m.—Road Conditions Bulletin.
- 5:40 p. m.—Mpls. Star News Story.
- 5:45 p. m.—Livestock Market Summary.
- 6:05 p. m.—World Book Man.
- 6:10 p. m.—The Deacon's Dicta—Wells-Dickey Co.
- 6:15 p. m.—Organ Interlude—Paul Oberg.
- 6:30 p. m.—Minnesota State Federation of Labor.
- 6:45 p. m.—Daddy and Rollo.
- 7:00 p. m.—Literary Digest Topics in Brief—Lowell Thomas.
- 7:15 p. m.—Old Gold Character Readings—Lorna Fantin.
- 7:30 p. m.—Kaltenborn Edits the News—S. W. Straus Co.
- 7:45 p. m.—Lee Morse, Blues Singer.
- 8:00 p. m.—Bulova Time Announcement.
- 8:00 p. m.—Henry-George — Consolidated Cigar Co.
- 8:30 p. m.—Philco Hour.
- 9:00 p. m.—Graybar's Joe and Vi.
- 9:15 p. m.—Blue Ribbon Malt Jester—Richie Craig, Jr.
- 9:30 p. m.—Paramount Public Radio Playhouse.
- 10:00 p. m.—Weather Report.
- 10:05 p. m.—Fletcher Henderson's Orchestra.
- 10:15 p. m.—Arthur Pryor's Crema Military Band.
- 10:30 p. m.—The Gruen Answer Man.
- 10:35 p. m.—Romanelli and his Orchestra.
- 11:00 p. m.—Tom Gates and his Oxford Ball-room Orchestra.

Helen Keller to be Heard Over WCCO



HELEN KELLER "LISTENING IN"

Helen Keller, who will broadcast at 10:30 a. m. Wednesday, April 22, on a program of Columbia's Radio Home-Makers' Club, listens to the radio with her finger-tips.

She has never heard a sound, she does not know her own voice. But through the vibrations of radio sound waves, she can sense sound through her finger tips. She cannot distinguish voices on the radio, although, by the burred sensation in her mind, she is aware of them. She keeps perfect time to music and can differentiate between classical and jazz rhythms. She enjoys the violin the most of all instruments.

In spite of her deafness, Miss Keller has learned to speak. This was made possible by Anne Sullivan Macy

who took her under her care when she was a child. Miss Keller's voice is a monotone, but the brightness in her face and her interesting comments, fascinate her listeners.

Her lack of sight and hearing have quickened her other senses. She says she almost smells that grass is green. She imagines colors in terms of emotions; red is courage, warmth, love; blue is hope; lavender, a caress.

She is very proud of the famous people she has met. She loves to come to Broadway and get jostled in the crowd. Through Anne Sullivan Macy, she knows everything that is going on. She enjoys dancing and once tried smoking a cigarette but as she says, "I didn't catch on to the cigarette; instead the cigarette caught on to me."

TUESDAY—APRIL 21

WDGY

- 9:30 a. m.—Beyer System Clinic.
- 9:45 a. m.—Chenille Rug Co.
- 10:00 a. m.—Town Market Furniture Co.
- 10:15 a. m.—Holsum Redheads.
- 10:30 a. m.—Holstad Coffee Co. Pipe Organ Program by Mr. Helsing.
- 10:45 a. m.—Minneapolis Box Spring and Mattress Co.
- 11:00 a. m.—Personality Class.
- 11:15 a. m.—Beauty Hints by Mr. Charles of Mar Seim.
- 11:30 a. m.—American Chenille Rug Co.
- 11:45 a. m.—Moler School of Beauty.
- 12:00 m.—Sustaining.
- 1:00 p. m.—Eva Ray—Economics Lecture.
- 1:30 p. m.—Rydeberg Sign Co.
- 2:00 p. m.—Romeo Gutsche Piano Program.
- 2:30 p. m.—Joseph Jacobson, Piaologue.
- 2:45 p. m.—Theronoid—Health Talk on Electro-Magnetism.
- 3:00 p. m.—Tea Party Program with Zelma Martin, Pianiste.
- 3:45 p. m.—Eleanor Carlson—Blues Program.
- 4:00 p. m.—Theatrical Attractions.
- 4:15 p. m.—Evelyn Sundberg—Blues Program.
- 4:30 p. m.—Minneapolis Shoe Co.
- 5:00 p. m.—Lorraine Brant and Rosella Fitzpatrick—Ukelele and Vocal.
- 5:30 p. m.—True Blue Lou.
- 5:50 p. m.—Sports Review.
- 6:00 p. m.—Les and Joe on the Radio.
- 6:15 p. m.—Ralph Reesberg and His El Patio Orchestra.
- 6:45 p. m.—9-minute Auto Wash Program.
- 7:30 p. m.—Two Ernie's for Town Market Furniture Co.
- 7:30 p. m.—No. 5 E. Lake St. Program—Courtsey of Orra G. Scott—Priebe's Orchestra.

WHDI

- 6:30 a. m.—Time O' Day.
- 6:35 a. m.—Morning News.
- 6:50 a. m.—Music.
- 7:00 a. m.—Health Exercises — Sunny Lou and Pat.
- 7:15 a. m.—Time O' Day.
- 7:30 a. m.—Health Exercises — Sunny Lou
- 7:35 a. m.—Time O' Day.
- 7:40 a. m.—Music.
- 7:50 a. m.—Weather Report.
- 8:00 a. m.—Timmy O' Day in Songs for the Kiddies.
- 8:05 a. m.—Musical Program.
- 8:50 a. m.—Housewives' Recipe Exchange.
- 8:55 a. m.—Time O' Day.
- 9:00 a. m.—Musical Program.
- 9:30 a. m.—Time O' Day.

WLB

- 8:00 p. m.—Informative Topic Program.
- 8:15 p. m.—Review—Johan Boyer—Thorvald B. Madsen, Scandinavian Department.
- 8:30 p. m.—Spanish Lesson—Professor E. C. Le Fort.

239.9—WRHM—1250

- 12:30 a. m.—Gluek Brewing Co.
- 7:00 a. m.—Morning Meditation — Rev. O. N. Sletten.
- 7:15 a. m.—Morning Time Signals.
- 7:30 a. m.—Popular Program.
- 7:45 a. m.—Creamette Company.
- 8:30 a. m.—Davis & Rueben.
- 9:00 a. m.—Community Builders.
- 9:30 a. m.—Progressive Upholstery Co.
- 10:35 a. m.—Jack Malerich, Organ.
- 11:00 a. m.—Chenille Rug Co.
- 11:15 a. m.—Julia Hayes.
- 11:45 a. m.—Harry Franklin Baker.
- 12:00 m.—Back on the Farm—Butler Mfg. Co.—Hy and Rube.
- 12:20 p. m.—Livestock and Weather Report.
- 1:00 p. m.—Popular Program.
- 1:45 p. m.—Central Tire & Supply Co.
- 2:00 p. m.—Augsburg Seminary.
- 2:30 p. m.—Lillian Thorpe Barnard.
- 3:00 p. m.—Mitty Sather Furn. Co.
- 3:45 p. m.—Francis Yaeger, pianist.
- 4:00 p. m.—Tingdale's Half Hour of Happiness.
- 5:15 p. m.—Big Brother Jim.
- 5:30 p. m.—Madame Eva Ray.

SATURDAY, APRIL 18, 1931

Romeo Gutsche

Evolution Symphonia

Because the need for new ideas is so acute and because despair has been expressed so many times concerning the creative vitality of our day, it is particularly exciting to discover that there is a young man who has an extraordinary store both of new ideas and of creating vitality. He is Romeo Gutsche; and Tuesday evening, April 28, he will present his Evolution Symphonia at the Unity Parish House in St. Paul.

It is this young man's principle that new affiliations between poetry and music should be found. The relation which he himself has discovered is a sort of democratic one in which the elements are independent, but complementary. In order that neither words nor music shall become subordinate in this union they are not woven intricately together as in opera. The poem is read first; and when it has expressed all that words, which are of necessity concrete and explicit, can communicate of the essential emotion, the music takes up the theme and develops its abstract possibilities.



Romeo Gutsche

The three phases of the development are concerned with the initial struggle of man to emerge out of barbarism; the middle period of growth with its mingled elements of fulfillment and failure; and finally the expression of a pet's home for the future. In order to dramatize the ideas which are verbally expressed in a familiar setting with familiar symbolic figures, Mr. Gutsche has given these names to the three divisions: "Romulus," "Nero's Dilemma," and "Ecce Homo."

Rome is, of course, the setting. In the background of the first section is the figure of the builder of Rome, the man who created a world out of a wilderness. The image is used merely to fix the attention and is not developed with any literal-minded exactness. Dominating the second part is the dramatic figure of the Mad Emperor, representative of a culture which developed far and then toppled itself into ruin.

Tickets for Romeo Gutsche's evolution symphonia are available at Foster & Waldo, Minneapolis, and W. J. Dyer Bros., St. Paul.

TUESDAY—APRIL 21

239.9—WRHM—1250

- 5:45 p. m.—Sports Review.
- 6:00 p. m.—Dusty and Rusty.
- 6:15 p. m.—Edgar Owen, Character Analyst.
- 6:30 p. m.—Majestic Hour of the Air.
- 7:00 p. m.—Varied Program.
- 7:30 p. m.—Insult Hour.
- 7:45 p. m.—Capt. Tim Healy.
- 9:00 p. m.—Who Is Who in St. Paul.
- 9:30 p. m.—Heating System, Inc.
- 9:45 p. m.—Luke Rader.
- 10:00 p. m.—Light and Cooke.
- 10:15 p. m.—Jay Claybrook, Baritone.
- 10:30 p. m.—Len Overby's Green Jackets.
- 11:00 p. m.—Snelling Tavern.
- 11:15 p. m.—Spanish Village.
- 11:45 p. m.—The Two Daffodils.

WEDNESDAY—APRIL 22

205.4—KSTP—1460

- 6:30 a. m.—Early Risers' Club — Time Signals.
- 7:00 a. m.—News Items.
- 7:25 a. m.—Program for the Day and General News and Foreign Dispatches.
- 7:30 a. m.—American Institute of Food Product—Organ Program.
- 7:45 a. m.—Jolly Bill and Jane.
- 8:00 a. m.—Quaker Early Birds—Gene and Glenn.
- 8:30 a. m.—Musical Interlude.
- 8:45 a. m.—A. and P. Gypsies.
- 9:00 a. m.—Musical Program.
- 9:15 a. m.—Morrison's Inc.
- 9:25 a. m.—Leader Dept. Store Parade.
- 9:30 a. m.—New York Stock Exchange Market Reports.
- 9:40 a. m.—Livestock Flash — Grain Markets.
- 9:45 a. m.—Musical Feature.
- 10:00 a. m.—Aunt Sammy Chat.
- 10:15 a. m.—Radio Household Institute.
- 10:45 a. m.—Charles Fashion Shop.
- 10:55 a. m.—Sim's Malto Wheat Program.
- 11:00 a. m.—Family Finance Talk—First National Bank of St. Paul.
- 11:15 a. m.—Quick Arrow Program.
- 11:30 a. m.—Livestock Flash — Grain Markets—Butter and Egg Markets.
- 11:45 a. m.—National Farm and Home Hour.
- 12:30 p. m.—Grand Cafe Orchestra.
- 12:45 p. m.—Blue Blazers.
- 1:00 p. m.—Marigold Dance Orchestra.
- 1:30 p. m.—Adventures of Captain Tim Healy.
- 1:45 p. m.—Sisters of the Skillet.
- 2:00 p. m.—Edna Wallace Hopper.
- 2:15 p. m.—Closing Grain Markets.
- 2:20 p. m.—New York Stock Exchange Market Reports.
- 2:30 p. m.—Evening Stars.
- 3:00 p. m.—The Gossipers.
- 3:15 p. m.—Eastman School Symphonic Orchestra.
- 3:30 p. m.—Pres. Schumaker—St. Thomas College.
- 4:00 p. m.—At Home and Abroad, General News and Foreign Dispatches, Hollywood News and Fashion Talk.
- 4:05 p. m.—Milady's Matinee.
- 4:15 p. m.—Ceel and Sally.
- 4:30 p. m.—Tea Timers.
- 4:45 p. m.—Children's Hour.
- 5:30 p. m.—News About Town.
- 5:45 p. m.—Road Condition Report.
- 6:05 p. m.—J. Adam Bede.
- 6:15 p. m.—David Lawrence Dispatch.
- 6:20 p. m.—Sports Review.
- 6:25 p. m.—Financial Resume.
- 6:30 p. m.—Vanna Johnstone.
- 6:45 p. m.—Harmony Threesome.
- 7:00 p. m.—Ballard Time Signal.
- 7:01 p. m.—Bobby Jones—Listerine Company.
- 7:15 p. m.—RCA Victor Program.
- 7:30 p. m.—Mobiloil Program.
- 8:00 p. m.—Halsey Stuart Program.
- 8:30 p. m.—Palmolive Hour.
- 9:30 p. m.—Coca Cola Program.
- 10:00 p. m.—Amos 'n' Andy.
- 10:15 p. m.—Camel Pleasure Hour.
- 11:15 p. m.—Ayer's News Bulletin.
- 11:16 p. m.—Time, Temperature, Weather.

WEDNESDAY—APRIL 22

205.4—KSTP—1460

- 11:20 p. m.—Louie's Hungry Five.
- 11:30 p. m.—Coliseum Orchestra.
- 12:00 p. m.—Orchestra.
- 12:30 a. m.—Dance Feature.

370.2—WCCO—810

- 6:45 a. m.—Albert Lea Hatchery Time Signal Program.
- 7:45 a. m.—The Old Dutch Girl.
- 8:00 a. m.—Time Signal Program.
- 8:30 a. m.—Associated Nurseries' Time Signal Program.
- 9:15 a. m.—Jo-Cur.
- 9:20 a. m.—Twin City Ice Merchants.
- 9:30 a. m.—Betty Crocker Home Service Talk.
- 9:45 a. m.—Weather and Market Reports, New York Stock Exchange.
- 10:00 a. m.—Hormel Program.
- 10:15 a. m.—Ben and Helen Talk It Over.
- 10:30 a. m.—Helen Keller, Speaking for the Five Arts Club.
- 10:55 a. m.—Bohn Refrigerator.
- 11:00 a. m.—Myndall Cain's Charm School.
- 11:15 a. m.—Health Service Program — Dr. W. A. O'Brien—Minnesota State Medical Association.
- 11:30 a. m.—Market Reports and New York Stock Exchange, Livestock Market Summary.
- 11:50 a. m.—Minnesota Police Association Bulletin.
- 12:00 m.—News Bulletin.
- 12:15 p. m.—Columbia Farm Community Network.
- 1:00 p. m.—Columbia Artists' Recital.
- 1:30 p. m.—American School of the Air.
- 2:00 p. m.—Weather and Market Reports.
- 2:30 p. m.—Syncopated Silhouettes.
- 2:40 p. m.—N. Y. Stock Exchange.
- 2:45 p. m.—Baseball Games—Chicago Cubs vs. Cleveland.
- 5:00 p. m.—The Chicken Dinner Joke Jam-boree.
- 5:05 p. m.—Bill Schudt's Going to Press.
- 5:15 p. m.—Winegar's Barn Orchestra.
- 5:30 p. m.—Paul Oberg—Piano.
- 5:40 p. m.—Mpls. Star News Story.
- 5:45 p. m.—Livestock Market Summary.
- 5:55 p. m.—Road Conditions Bulletin.
- 6:00 p. m.—Morton Downey, Tenor.
- 6:10 p. m.—The Deacon's Dicta—Well-Dickey Co.
- 6:15 p. m.—Felix Ferdinando and his Orchestra.
- 6:30 p. m.—Evangeline Adams, Astrologer—Forhan Co.
- 6:45 p. m.—Daddy and Rollo.
- 7:00 p. m.—Literary Digest Topics in Brief—Lowell Thomas.
- 7:15 p. m.—Barbasol Ben and His Barbers.
- 7:30 p. m.—The Sunniest Musical Cocktail—Calif. Fruit Growers Exchange.
- 8:00 p. m.—Bulova Time Announcement.
- 8:00 p. m.—Gold Medal Fast Freight—General Mills, Inc.
- 8:30 p. m.—Peter Pan Fabrics.
- 8:45 p. m.—Universal Topics—Mann Securities Co.
- 9:00 p. m.—Arco Coffee Orchestra — Andersen Ryan Co.
- 9:30 p. m.—McAleer Polishers.
- 9:45 p. m.—Weather Report.
- 9:50 p. m.—Columbia Concerts Corp.
- 10:15 p. m.—Arthur Fryer's Crema Military Band.
- 10:30 p. m.—Johnny Johnson's Pennsylvanians.
- 11:00 p. m.—Bud Struck and his Dance Orchestra.
- 11:30 p. m.—Stan Malotte, Organ.

WDGY

- 9:30 a. m.—Beyer System Clinic.
- 9:45 a. m.—Chenille Rug Co.
- 10:00 a. m.—Town Market Furniture Co.
- 10:15 a. m.—Holsum Redheads.
- 10:30 a. m.—Holstad Coffee Co.—Pipe Organ Program by Mr. Helsing.
- 10:45 a. m.—Minneapolis Box Spring and Mattress Co.
- 11:00 a. m.—Personality class.
- 11:15 a. m.—Beauty Hints by Mr. Charles of Mar Selm.
- 11:30 a. m.—Broadway Temple Devotional Hour—Rev. Carl Hognander.
- 12:00 m.—Moler School of Beauty.

George Watson

By Estelle Berggren



GEORGE WATSON

You have heard the story about the young man who had to go out into the world to make good. This story will be about a young man who went out into the world to do this very thing. He traveled, traveled, and then traveled a lot more, but he had to come back home before he could make good.

That man is George Watson, possessing one of the most pleasant voices in radio, and a real fellow who gets such a kick out of radio that he spends most of his time at the studios of KSTP whether he is working or not.

Mr. Watson is a tall, handsome fellow who is rated as one of the most versatile individuals at KSTP, from the information I gathered while interviewing him. It was back in 1921 that he was first seized with the wanderlust spirit and put on his hiking shoes, put an extra gallon of gas in his old fiver, patched the extra tire, and began traveling—where—it didn't make any difference. He was going out to seek his opportunity in the great outside world. As far as he was concerned, the Twin Cities and the Northwest had little fortune for him.

He traveled all over the Middle West as a traveling salesman, and then went South, making city after city, selling here and selling there. From the South he traveled northward along the eastern part of the United States and went into Canada, trekking along and enjoying life.

While on his journeys, he took his first fling at aviation and became a staunch booster for flying, stopping at all the larger cities on his route and taking every "hop" he could at each airport. After considerable time in the air he became a pilot with a limited license. He decided to return home for a vacation, and while looking over the Twin Cities, he found that a new radio station, KSTP, had been established.

Mr. Watson decided to take a hand at announcing, and after a tryout, was immediately engaged. He found that of all his fascinating avocations including aviation, traveling and selling, that radio had them all beat. He put his whole heart into the work and his interest grew from day to day. He told me that the first few months brought nothing but discouraging results, but that things soon looked better and that he now feels that a man "can make good in his own home town."

Mr. Watson feels that the educational value of radio is one of the greatest things about it. His pet program, as he told me, is the St. Paul Paramount theater broadcast each Monday at 11:30, when Leonard Leigh sits at the Wurlitzer and plays for late-hour radio fans. Both Mr. Watson and Mr. Leigh spend a great deal of time on this program in answering the requests of listeners and endeavoring to broadcast something new and novel.

KILDALL FISH CO.

EXTEND A MUSICAL TREAT TO ALL LISTENERS IN NORTHWEST

Tune In WRHM Every

[Monday Friday]
[6:30 P.M. 9:00 P.M.]

For that added Zest to the Luncheon or Dinner Menu.

ORDER A JAR OF Sterling Pickles

The Mark of Accepted Worth FROM YOUR GROCER TODAY

Home Owned Products for Home Folks

THE KILDALL CO.
MINNEAPOLIS

WEDNESDAY—APRIL 22

WDGY

- 12:15 p. m.—American Chenille Rug Co.
- 12:30 p. m.—Island Tin Shop Hawaiian Program.
- 1:00 p. m.—Eva Ray—Economics.
- 1:30 p. m.—Rydeberg Sign Co.
- 2:00 p. m.—Scotty, Billy and Mack.
- 2:30 p. m.—Evelyn Sem and Mayme Kurilla—Harmony and Blues.
- 2:45 p. m.—Geo. Warner—Guitar and Vocal.
- 3:00 p. m.—Tea Party Program With Frank Novak and Thelma Wilson.
- 3:15 p. m.—Mat de Long's Orchestra.
- 3:45 p. m.—Lester Evers—Lyric Tenor, Ballad Program.
- 4:00 p. m.—Theatrical Attractions.
- 4:15 p. m.—Bakken & Tostenson.
- 4:30 p. m.—Minneapolis Shoe Co.
- 4:45 p. m.—Al. Amoth.
- 5:00 p. m.—Fairbanks Tailoring Co.
- 5:15 p. m.—Stark Nursery Co.
- 5:30 p. m.—Jimmy Norton, Vocal.
- 5:45 p. m.—Sports Review.
- 6:00 p. m.—Nightingales Dancing Club Orchestra.
- 6:30 p. m.—Clara Sherman—Piano.
- 6:45 p. m.—9-minute Auto Wash Program.

WHDI

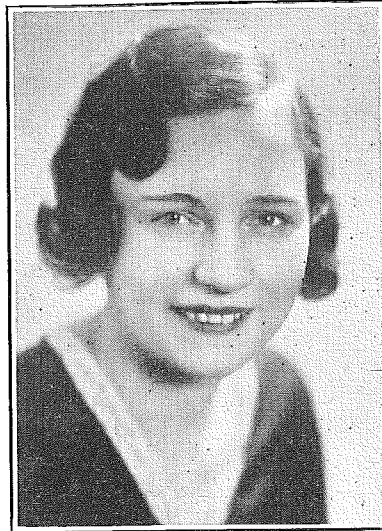
- 6:30 a. m.—Time O' Day.
- 6:35 a. m.—Morning News.
- 6:50 a. m.—Music.
- 7:00 a. m.—Health Exercises — Sunny Lou and Pat.
- 7:15 a. m.—Time O' Day.
- 7:30 a. m.—Health Exercises — Sunny Lou
- 7:35 a. m.—Time O' Day.
- 7:40 a. m.—Music.
- 7:50 a. m.—Weather Report.
- 8:00 a. m.—Timmy O' Day in Songs for the Kiddies.
- 8:05 a. m.—Musical Program.
- 8:50 a. m.—Housewives' Recipe Exchange.
- 8:55 a. m.—Time O' Day.
- 9:00 a. m.—Musical Program.
- 9:30 a. m.—Time O' Day.
- 7:00-8:00 p. m.—Tommy Thompson's Orchestra.

WLB

- 12:30 p. m.—University Farm Hour.
- 239.9—WRHM—1250
- 12:00 midnight—Liberty Cab Co.
 - 12:30 a. m.—Bluek Brewing Co.
 - 7:00 a. m.—Morning Meditations — Rev. V. O. Weidler.
 - 7:45 p. m.—Creanette Co.
 - 8:30 a. m.—Davis & Rueben.
 - 9:00 a. m.—Community Builders.
 - 9:15 a. m.—Minneapolis House Furniture Co.
 - 9:30 a. m.—Theronoid of Minneapolis.
 - 10:35 a. m.—Shopping Aids.
 - 10:45 a. m.—The Gadabouts.
 - 11:00 a. m.—Chenille Rug Co.
 - 11:15 a. m.—Julia Hayes.
 - 11:45 a. m.—Harry Franklin Baker.
 - 12:00 noon—Back on the Farm—Butler Mfg. Co.—Hy and Rube.
 - 12:20 p. m.—Livestock and Weather Report.
 - 1:00 p. m.—Popular Program.
 - 1:45 p. m.—Central Tire & Supply Co.
 - 2:15 p. m.—Theronoid of Minneapolis.
 - 2:30 p. m.—Lyle West at the Baldwin.
 - 3:00 p. m.—Mitby Sather Furn. Co.
 - 3:45 p. m.—Luke Rader.
 - 4:00 p. m.—Tingsdale's Half Hour of Happiness.
 - 4:30 p. m.—Tom and Ad.
 - 5:15 p. m.—Big Brother Jim.
 - 5:30 p. m.—Madam Eva Ray.
 - 5:45 p. m.—Sports Review.

Mary Charles

By J. G. Gude



MARY CHARLES

THE rise of Mary Charles to radio stardom was a perfectly conventional series of auditions and successful try-outs, uncolored by any of the tricks of fate that catapult many entertainers to fame. Mary's earlier career on the stage, however, brought a haphazard lot of coincidences and accidents. It was the kind of career one might expect would overtake a red-headed girl who possesses amazing resourcefulness, a good deal of courage and a splendid sort of humor.

Mary's first big chance at musical comedy came when she was chosen for the lead in the London cast of a successful Broadway eye-and-ear production. Not until the cast gathered for their first rehearsal on the other side was it discovered that Mary's part called for a contralto voice and she is quite definite a soprano. Most girls, one feels certain, would have been fairly discouraged over a break like that and would have accepted meekly the return passage to New York that was proffered by the director. But not Mary, though she was alone and unknown in London. She threw a good, old fashioned tantrum that did credit to

(Continued on Page 13)

WEDNESDAY—APRIL 22

239.9—WRHM—1250

- 6:00 p. m.—Dusty and Rusty.
- 6:15 p. m.—Edgar T. Owen, Character Analyst.
- 6:45 p. m.—Thompson Lumber Co.
- 7:00 p. m.—Musical Program.
- 7:30 p. m.—Home Builders' Program.
- 9:00 p. m.—Who Is Who in St. Paul.
- 9:30 p. m.—Musical Program.
- 9:45 p. m.—Northern Pacific Singers.
- 10:00 p. m.—New York Night Clubs.
- 10:15 p. m.—Francis Yaeger, Pianist.
- 10:30 p. m.—Hank's Hermits.
- 11:00 p. m.—Jolly Fellows.
- 11:15 p. m.—Spanish Village.
- 11:45 p. m.—Two Daffodils.

THURSDAY—APRIL 23

205.4—KSTP—1460

- 6:30 a. m.—Early Risers' Club — Time Signals.
- 7:00 a. m.—News Items.
- 7:25 a. m.—Program for the Day and General News and Foreign Dispatches.
- 7:30 a. m.—Musical Interlude.
- 7:45 a. m.—Jolly Bill and Jane.
- 8:00 a. m.—Quaker Early Birds—Gene and Glenn.
- 8:30 a. m.—Musical Interlude.
- 8:55 a. m.—Morrison's Inc.
- 9:00 a. m.—Musical Program.
- 9:15 a. m.—Musical Interlude.
- 9:25 a. m.—Leader Dept. Store Parade.
- 9:30 a. m.—New York Stock Exchange Market Reports.
- 9:40 a. m.—Livestock Flash — Grain Markets.
- 9:45 a. m.—Musical Interlude.
- 10:00 a. m.—Aunt Sammy Chat.
- 10:15 a. m.—Radio Household Institute.
- 10:30 a. m.—Sim's Malto Wheat Program.
- 10:35 a. m.—Bohn Refrigerator Co.
- 10:45 a. m.—Germania Tea Company.
- 11:00 a. m.—Musical Interlude.
- 11:15 a. m.—Quick Arrow Program.
- 11:30 a. m.—Livestock Flash, Grain Markets, Butter and Egg Markets.
- 11:45 a. m.—National Farm and Home Hour.
- 12:30 p. m.—George, the Lava Soap Man.
- 12:45 p. m.—American Legion Auxillary.
- 1:15 p. m.—St. Paul Humane Society Program.
- 1:45 p. m.—Sisters of the Skillet.
- 2:00 p. m.—Hollywood Lights.
- 2:15 p. m.—Closing Grain Markets.
- 2:30 p. m.—New York Stock Exchange Market Reports.
- 2:45 p. m.—The Gossipers.
- 3:00 p. m.—Lowe Bros. Program.
- 3:15 p. m.—Minnesota State Horticulture Society.
- 3:30 p. m.—Associated Nurseries, Inc.
- 3:35 p. m.—U. S. Army Band.
- 3:45 p. m.—Adam and Eva.
- 4:00 p. m.—At Home and Abroad, General News and Foreign Dispatches, Hollywood News and Fashion Talk.
- 4:15 p. m.—Cecil and Sally.
- 4:30 p. m.—Rinso Talkie.
- 4:45 p. m.—Children's Hour.
- 5:30 p. m.—News About Town.
- 5:45 p. m.—Road Condition Report.
- 6:05 p. m.—J. Adam Bede.
- 6:15 p. m.—David Lawrence Dispatch.
- 6:20 p. m.—Sports Review.
- 6:25 p. m.—Financial Resume.
- 6:30 p. m.—Phil Cook, the Quaker Oats Man.
- 6:45 p. m.—Williams' Ice-O-Matics.
- 7:00 p. m.—Ballard Time Signal.
- 7:01 p. m.—Fleischman Hour.

AT OUR NEW HOME

The Gleason Mortuary

27th Street at Nicollet Avenue
Dykewater 1716 Established 1884

Phone: Geneva 6432

CHARLES AUTO BODY & TOP SERVICE

Windshield Service Fender Repairing
Collision Work Body Repairing
527 North Seventh St. Minneapolis, Minn.

THURSDAY—APRIL 23

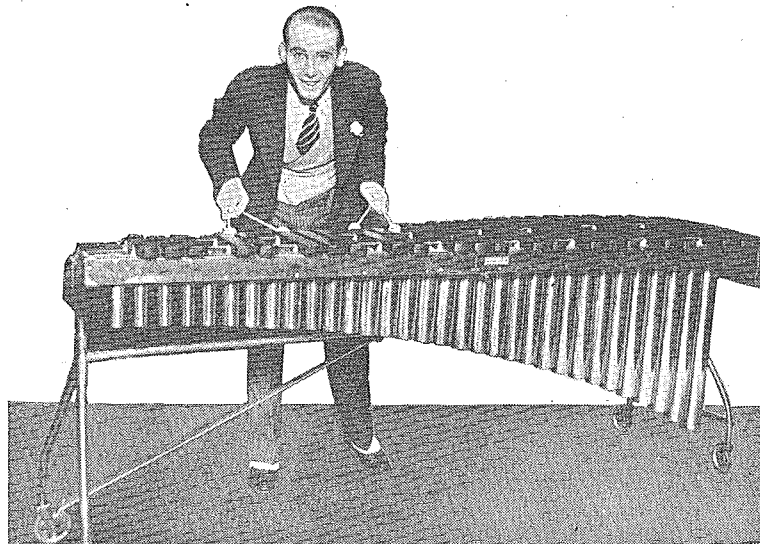
205.4—KSTP—1460

- 8:00 p. m.—Arco Birthday Party.
- 8:30 p. m.—Maxwell House Melodies.
- 9:00 p. m.—Lucky Strike Dance Orchestra.
- 9:30 p. m.—Packard Motor Car Co. Program.
- 10:00 p. m.—Amos 'n' Andy.
- 10:15 p. m.—Ayer's News Bulletin.
- 10:16 p. m.—Time, Temperature, Weather.
- 10:20 p. m.—Gratia Barre, Boudoir Hour.
- 10:30 p. m.—Louie's Hungry Five.
- 10:40 p. m.—KSTP Model Home Program.
- 11:10 p. m.—The National Derby.
- 11:20 p. m.—Boulevards of Paris Orchestra.
- 11:45 p. m.—Flame Room Orchestra.
- 12:00 p. m.—Dance Feature.

370.2—WCCO—810

- 6:45 a. m.—Albert Lea Hatchery Time Signal Program.
- 7:45 a. m.—Time Signal Program.
- 8:00 a. m.—Something for Everyone.
- 8:30 a. m.—Associated Nurseries Time Signal Program.
- 9:00 a. m.—Will Kill Announcement.
- 9:15 a. m.—Pequot Mills.
- 9:30 a. m.—World Book Woman.
- 9:40 a. m.—Jo-Cur.
- 9:45 a. m.—Barbara Gould Beauty Talk.
- 10:00 a. m.—Weather and Market Reports, New York Stock Exchange.
- 10:15 a. m.—Witt's Cooking School of the Air.
- 10:30 a. m.—Uneeda Bakers—National Biscuit Co.
- 11:00 a. m.—Dorothy Chase and the Charis Players.
- 11:15 a. m.—Mpls. District Dental Society.
- 11:30 a. m.—Market Reports and New York Stock Exchange Livestock Market Summary.
- 11:50 a. m.—Minnesota Police Association Bulletin.
- 12:00 m.—News Bulletin.
- 12:15 p. m.—Hugo Anderson — Maplewood Poultry Farm.
- 12:20 p. m.—Columbia Farm Community Network.
- 1:15 p. m.—Columbia Artists' Recital.
- 1:30 p. m.—American School of the Air.
- 2:00 p. m.—Weather and Market Reports.
- 2:30 p. m.—Fiske Jubilee Singers.
- 2:40 p. m.—N. Y. Stock Exchange.
- 2:45 p. m.—Baseball Game—Chicago Cubs vs. Cleveland.
- 5:00 p. m.—Price's Vanilla Players.
- 5:15 p. m.—The Chicken Dinner Joke Jam-boree.
- 5:20 p. m.—Gordon Kibbler's Fulton Royal Orchestra.
- 5:30 p. m.—Hit of the Week Program.
- 5:40 p. m.—Mpls. Star News Story.
- 5:45 p. m.—Livestock Market Summary.
- 5:55 p. m.—Road Conditions Bulletin.
- 6:00 p. m.—Morton Downey.
- 6:10 p. m.—The Deacon's Dicta — Wells-Dickey Co.
- 6:15 p. m.—With Our State Government—
- 6:30 p. m.—St. Moritz Orchestra.
- 6:45 p. m.—Daddy and Rollo.
- 7:00 p. m.—Literary Digest Topics in Brief —Lowell Thomas.
- 7:15 p. m.—Berry Bros. Program.
- 7:30 p. m.—Kaltenborn Edits the News—S. W. Straush Co.
- 7:45 p. m.—McCahill Company's Program.
- 8:00 p. m.—Bulova Time Announcement.
- 8:00 p. m.—The Politicians — Featuring Frank McInerney and Fred Lundberg.
- 8:15 p. m.—Old Gold Character Readings—Lorna Fantin.
- 8:30 p. m.—Lou Breese and his Music.
- 9:00 p. m.—The Lutheran Hour.
- 9:30 p. m.—Packard Motor Co.
- 10:00 p. m.—Weather Report.
- 10:05 p. m.—Jack Denny and his Orchestra from Montreal.
- 10:15 p. m.—Arthur Pryor's Cremona Military Band.
- 10:30 p. m.—Gruen Answer Man.
- 10:35 p. m.—Radio Roundup.
- 11:00 p. m.—Norvy Mulligan's Orchestra.

Former KSTP Artist Now Heard Over NBC



Red Norvo, wizard of the xylophone, who made thousands of friends in the Northwest through his work with the entertainment staff of KSTP last winter, is now on the staff of the National Broadcasting Company and may be heard during the Maytag program on Monday evening and the National Farm and Home Hour each noon-day through the National Broadcasting Company.

Mr. Norvo played in the National Battery symphony orchestra when he was with KSTP and featured with many solos during the busy evening broadcasts. During the late programs he played with Don Guthrie,

popular Canadian piano player and singer. Mr. Norvo also played with the Three Spooks, popular late-hour trio, of xylophone, piano and saxophone, which appeared on the radio stage each week at midnight to entertain with varied melodies.

Mr. Norvo's value as a xylophone player is realized in the fact that his hands are insured for \$100,000 against any possible injury as a precaution against unemployment. He also entertains with leading orchestras in Chicago. Mr. Norvo expects to visit the KSTP studios and revive old acquaintances within the near future.

CHICAGO SCENE OF FAST FREIGHTERS

The Windy City of Chicago will be the scene of the half hour visit of the Fast Freighters when they return to deliver their usual cargo of melody and harmony Wednesday evening, April 22, at 9 p. m. over WCCO. Points of interest in the big city will be visited by the passengers and crew.

OLD TIME POPULAR SONGS HEARD FRIDAY OVER WCCO

Songs that were popular between 1895 and 1922 will be sung and played by Peter Zorn and his Dutch Masters over WCCO at 7:30 p. m. Friday, April 24.

Helen Oelheim, the young contralto who fills the role of Freda Zorn, will sing "Won't You Come Home, Bill Bailey," and a great number of other old-timers.

TALLEST BUILDING DEDICATION TO BE BROADCAST

A radio program from the upper reaches of the tallest man-made structure in the world will be broadcast to listeners at 11:45 a. m. Friday morning, May 1, when NBC picks up speeches and ceremonies formally dedicating the new Empire State Building in New York City. KSTP will present this program to the Northwest. In addition to hearing talks at the luncheon from the eighty-sixth floor observatory, listeners will be taken on an explanatory tour of the dirigible mooring mast. An announcer will describe the lofty anchoring tower, and an airship expert will tell how it operates.

THURSDAY—APRIL 23

WDGY

- 9:30 a. m.—Beyer System Clinic.
- 9:45 a. m.—Chenille Rug Co.
- 10:00 a. m.—Town Market Furniture Co.
- 10:15 a. m.—Holsum Redheads.
- 10:30 a. m.—Holstad Coffee Co.—Pipe Organ Program by Mr. Helsing.
- 10:45 a. m.—Minneapolis Box Spring and Mattress Co.
- 11:00 a. m.—Personality Class.
- 11:15 a. m.—Beauty Hints by Mr. Charles of Mar Selm.
- 11:30 a. m.—American Chenille Rug Co.
- 11:45 a. m.—Moler School of Beauty.
- 12:00 m.—Ralph Reesberg's Orchestra.
- 12:30 p. m.—Wayne Overall Co.
- 1:00 p. m.—Eva Ray—Economics.
- 1:30 p. m.—Rydeberg Sign Co.
- 2:00 p. m.—Bill McKinney, Vocal.
- 2:30 p. m.—Mart Tryba, Vocal.
- 3:00 p. m.—Shopping News.
- 3:45 p. m.—Eleanor Carlson—Blues Program.
- 4:00 p. m.—Theatrical Attractions.
- 4:15 p. m.—Forest Brothe.
- 4:30 p. m.—Minneapolis Shoe Co.
- 4:45 p. m.—Bill Rondeau—Hill-Billy Songs with Guitar.
- 5:00 p. m.—Fairbanks Tailoring Co.
- 5:45 p. m.—Sports Review.
- 6:00 p. m.—Dance Orchestra.
- 6:30 p. m.—Betty Seland, Vocal.
- 6:45 p. m.—9-minute Auto Wash Program.
- 7:30 p. m.—Eagles Ballroom Orchestra Through Courtesy of Stecker Bros.

WHDI

- 6:30 a. m.—Time O'Day.
- 6:35 a. m.—Morning News.
- 6:50 a. m.—Music.
- 7:00 a. m.—Health Exercises — Sunny Lou and Pat.
- 7:15 a. m.—Time O'Day.
- 7:30 a. m.—Health Exercises — Sunny Lou
- 7:35 a. m.—Time O'Day.
- 7:40 a. m.—Music.
- 7:50 a. m.—Weather Report.
- 8:00 a. m.—Timmy O'Day in Songs for the Kiddies.
- 8:05 a. m.—Musical Program.
- 8:50 a. m.—Housewives' Recipe Exchange.
- 8:55 a. m.—Time O'Day.
- 9:00 a. m.—Musical Program.
- 9:30 a. m.—Time O'Day.

WLB

- 10:30 a. m.—Mothers' Hour—Play of Young Children, Florence Pitman.
- 8:00 p. m.—Debate—Department of Speech, University of Minnesota.
- 8:30 p. m.—French Lesson—Professor J. T. Frelin.

239.9—WRHM—1250

- 12:00 a. m.—Liberty Cab.
- 12:30 a. m.—Gluek Brewing Co.
- 7:30 a. m.—Morning Meditations — Rev. James Gronseth.
- 7:15 a. m.—Morning Time Signals.
- 7:30 a. m.—Popular Program.
- 7:45 a. m.—Creamette Co.
- 8:30 a. m.—Davis & Rueben.
- 9:00 a. m.—Community Builders.
- 9:30 a. m.—Progressive Upholstering Co.
- 11:00 a. m.—Chenille Rug Co.
- 11:15 a. m.—Julia Hayes.
- 11:45 a. m.—Harry Franklin Baker.
- 12:00 noon—Back on the Farm—Butler Mfg. Co.—Hy and Rube.
- 12:20 p. m.—Livestock and Weather Report.
- 1:00 p. m.—Popular Program.
- 1:45 p. m.—Central Tire & Supply Co.
- 2:00 p. m.—Mr. Mudge.
- 2:30 p. m.—Travelogue.
- 3:00 p. m.—Mitby Sather Furn. Co.
- 4:00 p. m.—Tingdale's Half Hour of Happiness.
- 5:15 p. m.—Big Brother Jim.
- 5:30 p. m.—Madame Eva Ray.
- 5:45 p. m.—Sports Review.
- 6:00 p. m.—Dusty and Rusty.
- 6:15 p. m.—Edgar T. Owen, Character Analyst.
- 6:30 p. m.—St. Paul Lutheran College.
- 6:45 p. m.—Insulite Program.
- 7:00 p. m.—Varied Program.
- 7:30 p. m.—Leitz Hardware Program.
- 9:00 p. m.—Who Is Who in St. Paul.
- 9:30 p. m.—Heating Systems, Inc.
- 9:45 p. m.—Luke Rader.

Mary Charles

(Continued from Page 11)

her red hair, told them to keep their old passage, and marched over to the establishment of M. Charlot, a musical comedy impressario, whose gift to America, a few years before, had been that famous pair of comedienne, Gertrude Lawrence and Beatrice Lillie.

Charlot knew a good thing when he saw it and Mary became a principal in his 1929 London Revue. It brought her immediate recognition and an after-theater job in London's smartest supper rendezvous, the Club Splendide. All in all it was a successful season, and Mary found herself in demand when she came back to New York.

But again bad luck, unaccountably silly bad luck, dogged her footsteps. The first thing she got into was a promising Broadway musical that opened up in Boston. A couple of days before opening night it seemed that only the first act had been written and the rest of the show was a miserable hodge-podge. It arrived in New York on schedule but lasted only a few weeks.

Her next job was a leading role in the Chicago production of "Sweet Adeline." The star fell ill and withdrew from the cast and the show never went on the boards.

Mary returned to New York, and once again Charlot, this time by indirection, kept her career alive. Jack Buchanan, who Charlot first introduced to Broadway along with Gertrude Lawrence and Beatrice Lillie, was looking for a partner to share the spotlight with him at New York's Cazanova Club. Mary got the job.

Her career progressed more smoothly from then on, and Paramount called her for talkie shorts with Charles Ruggles. That was a natural step to radio, for Paramount immediately made use of her talents for its weekly Paramount on Parade program over Columbia. Radio executives heard her just once and signed her up. She has been on a number of programs as a guest artist, and now is featured in a special period that is simply, but impressively, listed as "Mary Charles."

Mary was born in Philadelphia in 1907. She is a graduate of the Finch School in New York, loves the theater, hates meeting people, likes spaghetti, English clothes and fast automobiles, and has a quick temper.

She sings popular and character songs, and has a natural flare for dialects. She is particularly adept at impersonations of Irene Bordoni, Libby Holman, Helen Morgan and other stage personalities. She didn't like radio at first, loves it now, but still has that nervous feeling when she steps up to a microphone.

THURSDAY—APRIL 23

239.9—WRHM—1250

- 10:00 p. m.—Wesley Templers.
- 10:15 p. m.—Twin City Personalities.
- 10:30 p. m.—Oak Grove Country Club.
- 11:00 p. m.—Snelling Tavern.
- 11:15 p. m.—Spanish Village.
- 11:45 p. m.—Two Daffodils.

FRIDAY—APRIL 24

205.4—KSTP—1460

- 6:30 a. m.—Earl Risers' Club — Time Signals.
 - 7:00 a. m.—News Items.
 - 7:25 a. m.—Program for the Day and General News and Foreign Dispatches.
 - 7:30 a. m.—American Institute of Food Products—Organ Program.
 - 7:45 a. m.—Jolly Bill and Jane.
 - 8:00 a. m.—Quaker Early Birds — Gene and Glenn.
 - 8:15 a. m.—Mountain States Honey.
 - 8:30 a. m.—Musical Interlude.
 - 8:45 a. m.—Musical Program.
 - 9:00 a. m.—Morrison's Inc.
 - 9:05 a. m.—Aunt Sammy Chat.
 - 9:15 a. m.—Musical Interlude.
 - 9:25 a. m.—Leader Dept. Store Parade.
 - 9:30 a. m.—New York Stock Exchange Market Reports.
 - 9:40 a. m.—Livestock Flash — Grain Markets.
 - 9:45 a. m.—Josephine B. Gibson — Food Talk.
 - 10:00 a. m.—Musical Appreciation Hour.
 - 11:00 a. m.—Rumford Cooking School.
 - 11:15 a. m.—Swift Arrow Program.
 - 11:30 a. m.—Livestock Flash—Grain Markets —Butter and Egg Markets.
 - 11:45 a. m.—National Farm and Home Hour.
 - 12:30 p. m.—Blue Blazers.
 - 12:45 p. m.—Grand Cafe Orchestra.
 - 1:00 p. m.—U. S. Navy Talk.
 - 1:15 p. m.—Junior League Program.
 - 1:45 p. m.—Sisters of the Skillet.
 - 2:00 p. m.—Edna Wallace Hopper.
 - 2:15 p. m.—Closing Grain Markets.
 - 2:30 p. m.—New York Stock Exchange Market Reports.
 - 2:45 p. m.—The Gossipers.
 - 3:00 p. m.—Radio Guild Hour.
 - 4:00 p. m.—At Home and Abroad—General News and Foreign Dispatches, Hollywood News and Fashion Talk.
 - 4:05 p. m.—Vanna Johnstone, Astrologist.
 - 4:20 p. m.—Cecil and Sally.
 - 4:30 p. m.—Benjamin-Moore Triangle.
 - 4:45 p. m.—Bachke & Tein, Inc.
 - 5:00 p. m.—Steamboat Bill — Campbell Cereal Company.
 - 5:15 p. m.—Children's Hour.
 - 5:30 p. m.—News About Town.
 - 5:50 p. m.—Road Condition Report.
 - 6:05 p. m.—J. Adam Bede.
 - 6:15 p. m.—Ive's Fancy Molders.
 - 6:30 p. m.—Phil Cook, the Quaker Oats Man.
 - 6:45 p. m.—David Lawrence Dispatch.
 - 6:50 p. m.—Sports Review.
 - 6:55 p. m.—Financial Resume.
 - 7:00 p. m.—Ballard Time Signal.
 - 7:01 p. m.—Cities Service Cavaliers.
 - 8:00 p. m.—Interwoven Pair.
 - 8:30 p. m.—Armour Program.
 - 9:00 p. m.—Armstrong Quakers.
 - 9:30 p. m.—Woodard Price Co. Program.
 - 9:45 p. m.—Ship of Dreams—United Staes Bedding Company.
 - 10:00 p. m.—Amos 'n' Andy.
 - 10:15 p. m.—Ayers News Bulletin.
 - 10:16 p. m.—Time, Temperature, Weather.
 - 10:20 p. m.—Bouquet of Melodies.
 - 10:30 p. m.—Louie's Hungry Flve.
 - 10:40 p. m.—Ivey Company.
 - 11:00 a. m.—Mystery Feature—"The Unseen Hand."
 - 11:30 p. m.—Dance Feature.
- 870.2—WCCO—810
- 6:45 a. m.—Albert Lea Hatchery Time Signal Program.
 - 7:45 a. m.—The Old Dutch Girl.
 - 8:00 a. m.—Something for Everyone.
 - 8:30 a. m.—Associated Nurseries' Time Signal Program.
 - 9:20 a. m.—Twin City Ice Merchants.
 - 9:25 a. m.—Jo-Cur.
 - 9:30 a. m.—Betty Crocker's Home Service Talk.

FRIDAY—APRIL 24

370.2—WCCO—810

- 9:45 a. m.—Martin Senour Co.
- 10:00 a. m.—Weather and Market Reports, New York Stock Exchange.
- 10:15 a. m.—Crisco Program.
- 10:30 a. m.—Ivory Soap Program.
- 10:45 a. m.—The Arnao Serenade to Beauty—Andre Duval.
- 11:05 a. m.—Bohn Refrigerator.
- 11:15 a. m.—Minneapolis Art Institute.
- 11:30 a. m.—Market Reports and New York Stock Exchange.
- 11:50 a. m.—Minnesota Police Assn. Bulletin.
- 12:00 m.—News Bulletin.
- 12:15 p. m.—Columbia Farm Community Network.
- 1:00 p. m.—Columbia Artists' Recital.
- 1:30 p. m.—American School of the Air.
- 2:00 p. m.—Weather and Market Reports.
- 2:30 p. m.—U. S. Marine Band.
- 2:40 p. m.—N. Y. Stock Exchange.
- 2:45 p. m.—Baseball Game—Chicago Cubs vs. Cleveland.
- 5:00 pm. m.—The Chicken Dinner Joke Jam-boree.
- 5:05 p. m.—Children's Comrade Club—Peggy and Pal.
- 5:30 p. m.—Curtiss Candy Co.
- 5:40 p. m.—Mpls. Star News Story.
- 5:45 p. m.—Livestock Market Summary.
- 5:55 p. m.—Road Conditions Bulletin.
- 6:05 p. m.—World Book Man.
- 6:10 p. m.—The Deacon's Dicta—Wells-Dickey Co.
- 6:15 p. m.—Organ Interlude—Paul Oberg.
- 6:30 p. m.—Jacques Renard and his Orchestra.
- 7:00 p. m.—Literary Digest Topics in Brief—Lowell Thomas.
- 7:15 p. m.—Barbasol Ben and his Barbers.
- 7:30 p. m.—Dutch Masters.
- 8:00 p. m.—Bulova Time Announcement.
- 8:00 p. m.—Continental Oil Co.
- 8:30 p. m.—Phoenix Hosiery Program.
- 8:45 p. m.—Musical Program.
- 9:00 p. m.—Van Heusen Program.
- 9:30 p. m.—Grand Slam Golf Club Program.
- 9:45 p. m.—Officer Mulcahey—Silvertown Safety League.
- 10:00 p. m.—Weather Report.
- 10:05 p. m.—Fletcher Henderson and His Orchestra.
- 10:15 p. m.—Arthur Pryor's Crema Military Band.
- 10:30 p. m.—Ben Bernie and His Orchestra.
- 11:00 p. m.—Dick Long's Concert Orchestra.

WDGY

- 9:30 a. m.—Beyer System Clinic.
- 9:45 a. m.—Chenille Rug Co.
- 10:00 a. m.—Town Market Furniture Co.
- 10:15 a. m.—Holsum Redheads.
- 10:45 a. m.—Minneapolis Box Spring and Mattress Co.
- 11:00 a. m.—Personality Class.
- 11:15 a. m.—Beauty Hints by Mr. Charles of Mar Selin.
- 11:30 a. m.—American Chenille Rug Co.
- 11:45 a. m.—Moler Schol of Beauty Culture.
- 12:00 m.—Sustaining.
- 1:00 p. m.—Eva Ray—Economics.
- 1:30 p. m.—Rydeberg Sign Co.
- 2:00 p. m.—Romeo Gutsche—Piano Interlude.
- 2:15 p. m.—Little Al—Vocal interlude.
- 2:30 p. m.—Joseph Jacobson—Pianologue.
- 2:45 p. m.—Health Talk.
- 3:00 p. m.—Tea Party Program With Geo. Getsey and Thelma Wilson.
- 3:15 p. m.—Mat de Long's Orchestra.
- 3:45 p. m.—Lester Evers—Lyric Tenor.
- 4:00 p. m.—Theatrical Attractions.
- 4:15 p. m.—Evelyn Sundberg—Blues Songs.
- 4:30 p. m.—Minneapolis Shoe Co.
- 5:00 p. m.—Fairbank Tailoring Co.

Ted Husing

(Continued from Page 5)

out the hulking cowboy, Willard, in the fourth round of the fight. The genial employer gave him ten to one, and Ted quit his job with \$120.

With his immense energy and concentration Husing learns all there is to know about any job that interests him. Announcing interested him from the start and it still does. Within six months after entering radio he was introducing the President of the United States to 50,000,000. Two weeks before the International Matches at Meadowbrook last summer he had never seen a polo match. He spent every free afternoon watching practice sessions, spent nights in the public library studying, and later was able to astonish Herbert Reed, who worked with him during the International Matches, with his sound knowledge of the game.

Ted Husing is as much a part of Broadway as Times Square. He wears the most astonishing clothes, including a blue tuxedo—clothes that would make a matinee idol look shoddy, and can talk, if necessary, at the rate of 300 words a minute.

Cabinet Going on Air Starting April 25

President Hoover's Cabinet is going on the air.

Starting April 25 and continuing for ten consecutive weeks, members of the cabinet will appear in the National Radio Forum arranged by the Washington Star and carried over a coast-to-coast network of the Columbia Broadcasting system. They will be heard each Saturday night at 8:30 p. m. It is expected that more than fifty radio stations will be linked together in broadcasting this special cabinet series.

In the forthcoming series President Hoover's cabinet will tell the people of the nation about the operation of their respective departments and deal with some of the more outstanding problems faced by this country at the present time. At no time in a decade has there been more complex problems of government than those of the moment and it is the belief of official Washington that when the cabinet series will have ended people generally will have full comprehension of the workings of government departments.

FRIDAY—APRIL 24

WDGY

- 5:15 p. m.—Stark Nursery Co.
- 5:30 p. m.—True Blue Lou.
- 5:45 p. m.—Sports Review.
- 6:00 p. m.—Ernie and Hal.
- 6:30 p. m.—John Wilfahrt's Orchestra from Eagles' Ballroom through Courtesy of Stecker Bros.
- 6:45 p. m.—9-minute Auto Wash Program.

WHDI

- 6:30 a. m.—Time O'Day.
- 6:35 a. m.—Morning News.
- 6:50 a. m.—Music.
- 7:00 a. m.—Health Exercises — Sunny Lou and Pat.
- 7:15 a. m.—Time O'Day.
- 7:30 a. m.—Health Exercises — Sunny Lou
- 7:35 a. m.—Time O'Day.
- 7:40 a. m.—Music.
- 7:50 a. m.—Weather Report.
- 8:00 a. m.—Timmy O'Day in Songs for the Kiddies.
- 8:05 a. m.—Musical Program.
- 8:50 a. m.—Housewives' Recipe Exchange.
- 8:55 a. m.—Time O'Day.
- 9:00 a. m.—Musical Program.
- 9:30 a. m.—Time O'Day.

WLB

- 12:30 p. m.—University Farm Hour.
- 4:00 p. m.—Organ Recital.

239.9—WRHM—1250

- 12:00 midnight—The Midnight Revelers.
- 12:25 a. m.—Gluek Brewing Co.
- 7:00 a. m.—Morning Meditations — Rev. Geo. Hoffman.
- 7:15 a. m.—Morning Time Signals.
- 7:30 a. m.—Foreman & Clark.
- 7:45 a. m.—Creanette Company.
- 8:30 a. m.—Davis & Rueben.
- 9:00 a. m.—Community Builders.
- 9:15 a. m.—Minneapolis House Furnishing Co.
- 9:30 a. m.—Theronoid of Minneapolis.
- 10:35 a. m.—Shopping Aids.
- 11:00 a. m.—Chenille Rug Co.
- 11:15 a. m.—Julia Hayes.
- 11:45 a. m.—Harry Franklin Baker.
- 12:00 m.—Back on the Farm—Butler Mfg. Co.
- 12:20 p. m.—Livestock and Weather Report.
- 1:00 p. m.—Popular Program.
- 1:45 p. m.—Central Tire & Supply Co.
- 2:00 p. m.—Tingdale's Half Hour of Happiness.
- 3:00 p. m.—Mitby Sather Furn. Co.
- 3:45 p. m.—Musical Program.
- 5:15 p. m.—Big Brother Jim.
- 5:30 p. m.—Madam Eva Ray.
- 5:45 p. m.—Sports Review.
- 6:00 p. m.—Dusty and Rusty.
- 6:15 p. m.—Edgar T. Owen, Character Analyst.
- 6:30 p. m.—Davis & Rueben.
- 7:00 p. m.—Popular Program.
- 7:30 p. m.—Musical Varieties.
- 7:45 p. m.—Capt. Tim Healy.
- 9:00 p. m.—Who Is Who in St. Paul.
- 9:30 p. m.—Heating Systems, Inc.
- 9:45 p. m.—Luke Rader.
- 10:00 p. m.—Kildall Co.
- 10:30 p. m.—Oak Grove Country Club.
- 11:00 p. m.—Snelling Tavern.
- 11:15 p. m.—Spanish Village.
- 11:45 p. m.—Two Daffodils.

SATURDAY—APRIL 25

205.4—KSTP—1460

- 6:30 a. m.—Early Risers' Club — Time Signals.
- 7:00 a. m.—News Items.
- 7:25 a. m.—Program for the Day and General News and Foreign Dis-

NEON - ELECTRIC PROCESS PRINTED SIGNS PAINTED DISPLAYS WALLS - BULLETINS

Prather Advertising Co.

OUTDOOR ADVERTISING 1211 Washington Avenue South
Geneva 8801 Minneapolis, Minn.

TROVALL RADIO SERVICE

Entrance Kimball Piano Co. Store

20 South Eighth Street

Prompt, Competent Service on All Makes of Radios

Atlantic 0491-0492

Evenings, Call Drexel 5827

SATURDAY—APRIL 25

205.1—KSTP—1460

- patches.
 7:30 p. m.—Musical Interlude.
 7:45 a. m.—Jolly Bill nad Jane.
 8:00 a. m.—Quaker Early Birds—Gene and Glenn.
 8:15 a. m.—Musical Interlude.
 8:30 a. m.—Gayle Wood—Piano.
 9:15 a. m.—Sim's Malto Wheat Program.
 9:25 a. m.—Leader Dept. Store Program.
 9:30 a. m.—New York Stock Exchange Market Reports.
 9:40 a. m.—Livestock Flash — Grain Markets.
 9:45 a. m.—Musical Interlude.
 10:00 a. m.—Aunt Sammy Chat.
 10:15 a. m.—Bohn Refrigerator Co.
 10:30 a. m.—Keys to Happiness.
 11:00 a. m.—McKesson Co. Program.
 11:15 a. m.—Quick Arrow Program.
 11:30 a. m.—Livestock Flash & Grain Markets—Butter and Egg Markets.
 11:50 a. m.—New York Stock Exchange Market Reports.
 12:00 m.—Farm and Home Hour.
 12:30 p. m.—Keystone Chronicles.
 12:45 p. m.—4-H Club.
 1:00 p. m.—Blue Blazers.
 1:15 p. m.—Al and Pete.
 1:30 p. m.—Tuneful Tunes.
 2:00 p. m.—Matinee Melodies.
 2:30 p. m.—Chicago Serenade.
 2:45 p. m.—The Gossipers.
 3:00 p. m.—Frank Cotier and Orchestra.
 3:30 p. m.—Relays from Drake University.
 4:30 p. m.—At Home and Abroad—General News, Foreign Dispatches, Hollywood News and Fashion Talk.
 4:45 p. m.—Cecil and Sally.
 4:45 p. m.—Children's Hour.
 5:30 p. m.—News About Town.
 5:45 p. m.—Road Condition Report.
 6:05 p. m.—J. Adam Bede.
 6:15 p. m.—David Lawrence Dispatch.
 6:20 p. m.—Sports Review.
 6:25 p. m.—Financial Resume.
 6:30 p. m.—Ted Lewis and His Band.
 7:00 p. m.—Webster Program — Weber & Fields.
 7:15 p. m.—Vanna Johnstone, Astrologist.
 7:30 p. m.—Fuller Brush Hour.
 8:00 p. m.—General Electric Hour.
 9:00 p. m.—Lucky Strike Dance Orchestra.
 10:00 p. m.—Amos 'n' Andy.
 10:15 p. m.—Ayers News Bulletin.
 10:16 p. m.—Time, Temperature, Weather.
 10:18 p. m.—Schwartz Brothers Laundry—"Harmony Hurricane"
 10:30 p. m.—Louie's Hungry Five.
 10:45 p. m.—Little Jack Little.
 11:00 p. m.—Marigold Ballroom.
 11:15 p. m.—Flame Room Orchestra.
 11:30 p. m.—Boulevards of Paris Orchestra.
 11:45 p. m.—Coliseum Orchestra.
 12:00 p. m.—Dodo Club Frolic.

370.2—WCCO—810

- 6:45 a. m.—Albert Lea Hatchery Time Signal Program.
 8:30 a. m.—Association Nurseries Time Signal Program.
 9:00 a. m.—Leonard Frank Co.
 9:15 a. m.—Jerry Harrington and Irene Harris, the Iowanans—Jacob E. Decker & Sons.
 9:45 a. m.—Weather and Market Reports, New York Stock Exchange.
 10:00 a. m.—Adventures of Helen and Mary.
 10:30 a. m.—Jo-Cur.
 10:40 a. m.—Columbia Revue.
 11:00 a. m.—Myndall Cain's Charm School.
 11:15 a. m.—Hobby and Handicraft Hour.
 11:30 a. m.—Market Reports and New York Exchange, Livestock Market Summary.
 11:50 a. m.—Minnesota Police Assn. Bulletin.

FOREST O. REINE
Radio Service Specialist
 Day and Night Service
Call Cherry 9668

SATURDAY, APRIL 18, 1931

'Sleep Better Ship O' Dreams' Program

Two soloists, Julie Barr, soprano, and William Davidson, baritone, will present the "Sleep Better Ship O' Dreams" program over KSTP at 9:45 p. m. Friday, April 24.

Mr. Davidson will open the program with the singing of "Caprice Viennois," and Miss Barr will present the first lullaby "Hush, Curly Head." Two other numbers by Mr. Davidson will include "Rocky Mountain Lullaby," and "Blue Is the Night," the current fox trot.

"Were You Sincere," will be another offering by Miss Barr, and the playing of Victor Herbert's "Dream Love" from 'Prima Donna' by the orchestra will complete the program.

SATURDAY—APRIL 25

370.2—WCCO—810

- 12:00 m.—Weather and Market Reports.
 12:30 p. m.—Columbia Farm Community Network.
 1:00 p. m.—Columbia Artists Recital.
 1:15 p. m.—National Democratic Club Forum.
 2:00 p. m.—The Four Clubmen.
 2:30 p. m.—Saturday Syncopaters.
 2:45 p. m.—Baseball Game — Chicago Cubs vs. Cleveland.
 5:00 p. m.—Ted Husing's Sportslants.
 5:30 p. m.—Romona Gerhard, Organ.
 5:50 p. m.—Road Conditions Bulletin.
 5:55 p. m.—Mpls. Star News Story.
 6:00 p. m.—Dinner Concert—Wesley Barlow's Nicollet Hotel Orchestra.
 6:15 p. m.—What's Doing in Mpls. Next Week — John Burgess, Vice-President, Civic & Commerce Association.
 6:30 p. m.—Atwood Request Coffee Drinkers.
 7:00 p. m.—Literary Digest Topics in Brief — Lowell Thomas.
 7:15 p. m.—Minnesota Taxpayers Assn.
 7:30 p. m.—Chevrolet Chronicles.
 8:00 p. m.—Bulova Time Announcement.
 8:00 p. m.—Olson Rug Co.
 8:30 p. m.—WCCO Artists' Bureau Recital.
 9:00 p. m.—Hank Simmons Showboat.
 10:00 p. m.—Weather Report.
 10:05 p. m.—Jack Denny and his Orchestra from Montreal.
 10:15 p. m.—Arthur Pryor's Cremona Military Band.
 10:30 p. m.—Gruen Watch Makers.
 10:35 p. m.—Guy Lombardo and his Royal Canadians.
 11:00 p. m.—Dance Program — Curtis Hotel Orchestra, Dick Long, Director.
 11:30 p. m.—Hotel Lowry Night Club.
 12:15 a. m.—Tom Gates Ballroom Orchestra..

WDGY

- 9:30 a. m.—Beyers System Clinic.
 9:45 a. m.—Minneapolis Shoe Co.
 10:00 a. m.—Theronoid Health Talk.
 10:15 a. m.—Holsum Redheads.
 10:30 a. m.—Holstad Coffee Co.—Pipe Organ Program by Mr. Helsing.
 10:45 a. m.—Minneapolis Box Spring and Mattress Co.
 11:00 a. m.—Personality class.
 11:15 a. m.—Beauty Hints by Mr. Charles of MarSelm.
 11:30 a. m.—American Chenille Rug Co.
 11:45 a. m.—Moler School of Beauty Culture.
 12:00 m.—Fairbanks Tailoring Co.
 12:15 p. m.—Orchestra Program.
 1:15 p. m.—Marilyn Keatley, Piano.
 1:30 p. m.—Rydeberg Sign Co.
 2:00 p. m.—Evelyn Sehm and Mayme Kurilla—Harmony and Blues Selec-

SATURDAY—APRIL 25

WDGY

- tions.
 2:15 p. m.—John Holmgren—Piano and Vocal.
 2:30 p. m.—George Werner—Guitar and Vocal.
 3:00 p. m.—Palmer Brothers.
 3:15 p. m.—Harmony Program.
 3:30 p. m.—Whoopee Bill—Old Time Dance Orchestra.
 4:00 p. m.—Theatrical Attractions.
 4:15 p. m.—B. C. Hegener, Guitar.
 4:45 p. m.—John Peterson's Troubadours.
 6:00 p. m.—Broadway Temple Musical Hour — Rev. Carl Hognander.
 6:45 p. m.—9-minute Auto Wash Program.
 7:00 p. m.—Eagles Ballroom Orchestra Through Courtesy of Stecker Bros.
WHDI
 6:30 a. m.—Time O' Day.
 6:35 a. m.—Morning News.
 6:50 a. m.—Music.
 7:00 a. m.—Health Exercises — Sunny Lou and Pat.
 7:15 a. m.—Time O' Day.
 7:30 a. m.—Health Exercises — Sunny Lou
 7:35 a. m.—Time O' Day.
 7:40 a. m.—Music.
 7:50 a. m.—Weather Report.
 8:00 a. m.—Timmy O' Day in Songs for the Kiddies.
 8:05 a. m.—Musical Program.
 8:50 a. m.—Housewives' Recipe Exchange.
 8:55 a. m.—Time O' Day.
 9:00 a. m.—Musical Program.
 9:30 a. m.—Time O' Day.

WRHM

- 12:00 midnight—Liberty Cab.
 12:25 a. m.—Gluek Brewing Co.
 7:00 a. m.—Morning Meditations — Rev. Geo. O. Marsh.
 7:15 a. m.—Morning Time Signals.
 7:30 a. m.—Popular Program.
 7:45 a. m.—Creamette Co.
 8:30 a. m.—Davis & Rueben.
 9:00 a. m.—Community Builders.
 9:30 a. m.—Progressive Upholstering Co.
 10:35 a. m.—Jack Malerich, Organ.
 11:00 a. m.—Chenille Rug Co.
 11:15 a. m.—Julia Hayes.
 11:45 a. m.—Harry Franklin Baker.
 12:00 m.—Butler Mfg. Co.—Back on the Farm—Hy and Rube.
 12:20 p. m.—Livestock and Weather Report.
 1:00 p. m.—Popular Program.
 1:45 p. m.—Central Tire & Supply Co.
 2:30 p. m.—Rhythm Vagabonds.
 3:00 p. m.—Mitby Sather Furr. Co.
 4:00 p. m.—Tingdale's Half Hour of Happiness.
 5:15 p. m.—Big Brother Jim.
 5:30 p. m.—Madame Eva Ray.
 5:45 p. m.—Sports Review.
 6:00 p. m.—Dusty and Rusty.
 6:15 p. m.—Edgar T. Owen, Character Analyst.
 6:30 p. m.—McPhail Players.
 6:45 p. m.—Rosedale Lutheran Church—Rev. Gronseth.
 7:00 p. m.—Musical Program.
 7:45 p. m.—Dr. Geo. Mecklenburg—"Behind the Headlines."
 8:15 p. m.—WRHM Juniorettes.
 8:30 p. m.—Baldwin Piano Hour.
 9:00 p. m.—Who Is Who in St. Paul.
 9:30 p. m.—Heating Systems, Inc.
 9:45 p. m.—Luke Rader.
 10:00 p. m.—Mr. Eggers, Talk on Interference.
 10:15 p. m.—Oak Grove Country Club.
 10:30 p. m.—Spanish Village.
 11:00 p. m.—Snelling Tavern.
 11:30 p. m.—Saturday Nighters.

HEAR ARJUNA!

11:00 A. M. Daily over WDGY
 Noted Psychologist and Master Philosopher Lecturing on "Personality" and Answering Questions.
Regina-Maia Cosmetics Laboratories
 816 LaSalle Ave., Minneapolis, Minn.